

EXHIBIT B UTILITY DESIGN SHEET

PROJECT

Utility Co. #	Conflict #
---------------	------------

Utility Owner: Mountain View Electric Public Private

SECTION TO BE COMPLETED PRIOR TO NEGOTIATION MEETING

Existing Condition

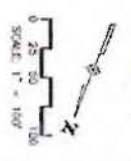
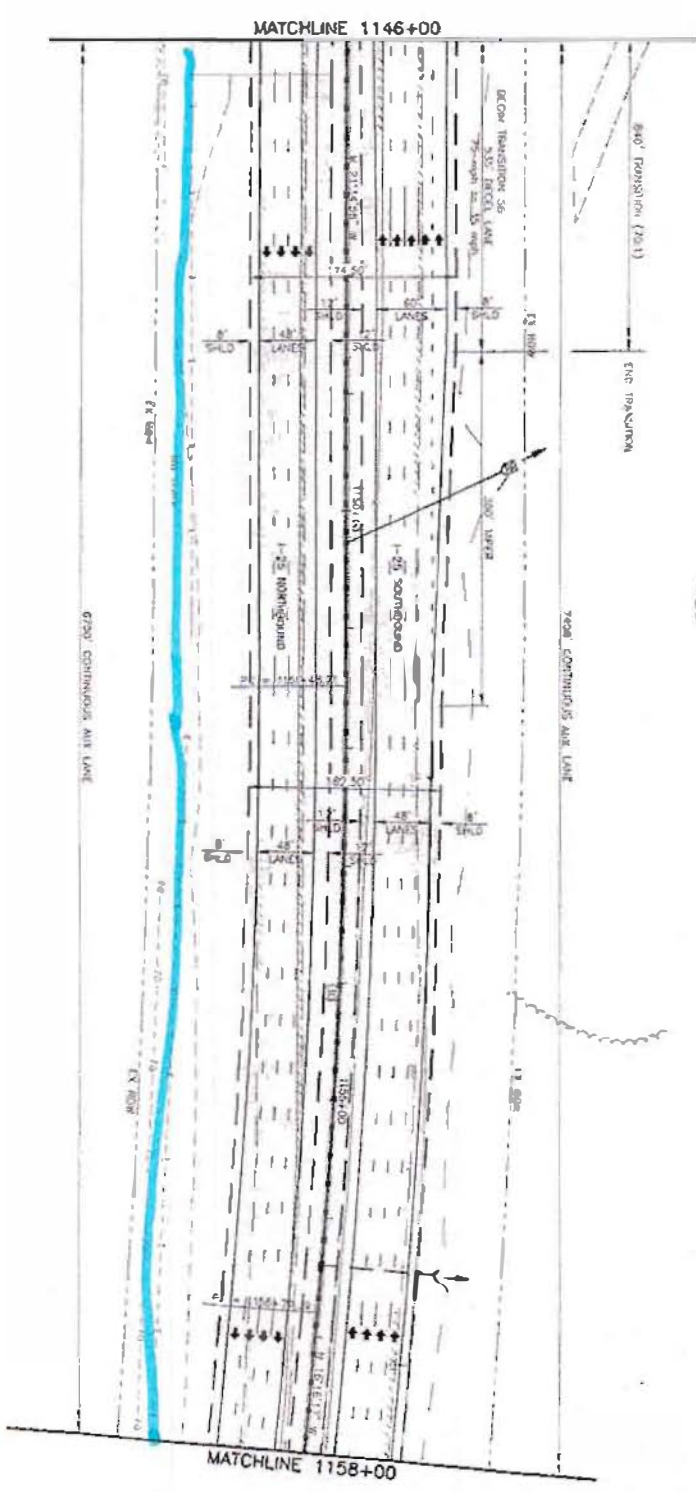
- General Location: DH & UG lines on East Rowline and Underground on North Gate Road to AF21.
- Utility type: Electric Gas Communications Water Sanitary Cable TV Irr. Canal
 other _____
- Location by: Utility plat maps; Field located and surveyed: Yes No; Porch: Yes No
If pothole, # _____ from: CDOT pothole or DBC pothole HCL used: _____
Station: _____ to Station: _____ Dist. from HCL: _____ Rt. / Lt. _____
- Utility size & type of materials: 125 KV line - Underground Electric in 3" Conduits.
- Environmental Concerns: Mouse Area.
- Encased: No Yes, if so size & material: 3" Electric Conduits
This section completed by DBC Rep.: _____ Date: _____

SECTION TO BE COMPLETED AT NEGOTIATION MEETING

Proposed Resolution

- Recommendation: left alone modified removed relocated upgraded abandoned in place
Conflict with: _____
- This utility may be modified/relocated to: _____
Station: _____ to Station: _____ Dist. from HCL: _____ Rt./Lt. _____
- Utility in: CDOT ROW other public ROW Easement (attach copy) other _____
- Who will do the Utility Relocation Plan: Utility Company (UC) Design/Build Contractor (DBC)
- Who will do the construction: Utility Company (UC) Design/Build Contractor (DBC)
- UC to perform inspection? No Yes, if so conditions: _____
- Number of days required for prior notification by DBC for construction by UC: _____ days
- Number of days required by UC or DBC to complete Utility Relocation Plan: _____ days; Construction: _____ days.
- Any construction details unique to this location? No Yes, if yes describe: _____
- Utility can be disconnected for: _____ days/hours.
- Other proposed action: _____
- Contractor Drawings confirming conflict must be attached
This section completed by: Utility Co. _____ Date: _____ DBC _____ Date: _____

CURVE DATA									
CURVE NO.	A ₁	B ₁	R ₁	L ₁	T ₁	e	MOS	SSD	
30	105.94°	01.00700°	5210.00'	5.3114'	355.78'	0.41'	80	511.0	



1-25 EA CONCEPTUAL DESIGN

1100+28
 ROAD 145° 145' 00" B
 1100+28 145° 145' 00" B
 1100+28 145° 145' 00" B
 END SECTION AND ROAD L^T

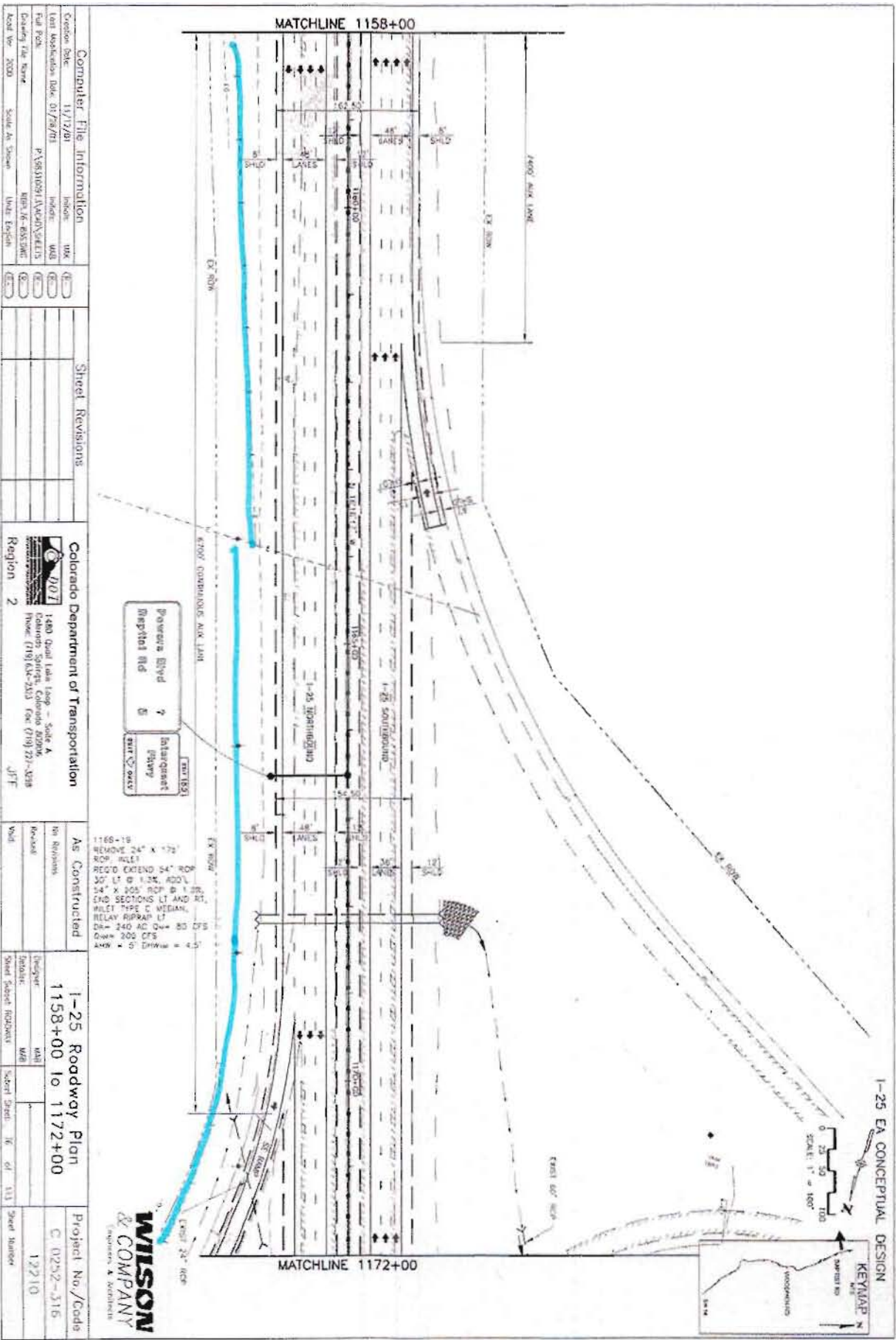
1158+00
 ROAD 24° 24' 00" B
 1158+00 24° 24' 00" B
 1158+00 24° 24' 00" B

Computer File Information		Sheet Revisions	
Creation Date	11/17/01	WJ	WJ
Last Application Date	01/28/03	WJ	WJ
File Path	F:\93\10291\VCAD\BELTS	WJ	WJ
Drawing File Name	10156-75.DWG	WJ	WJ
Drawn By	Scale As Shown	WJ	WJ
Drawn No.	Scale As Shown	WJ	WJ

Colorado Department of Transportation		As Constructed	
Region	2	As Constructed	
Project	1-25 Roadway Plan	As Constructed	
Sheet No.	75 of 111	As Constructed	

Wilson & Company		Project No./Code	
Engineer	WJ	Project No./Code	C 0252-516
Checker	WJ	Sheet No.	12210

WILSON & COMPANY
 ENGINEERS & ARCHITECTS



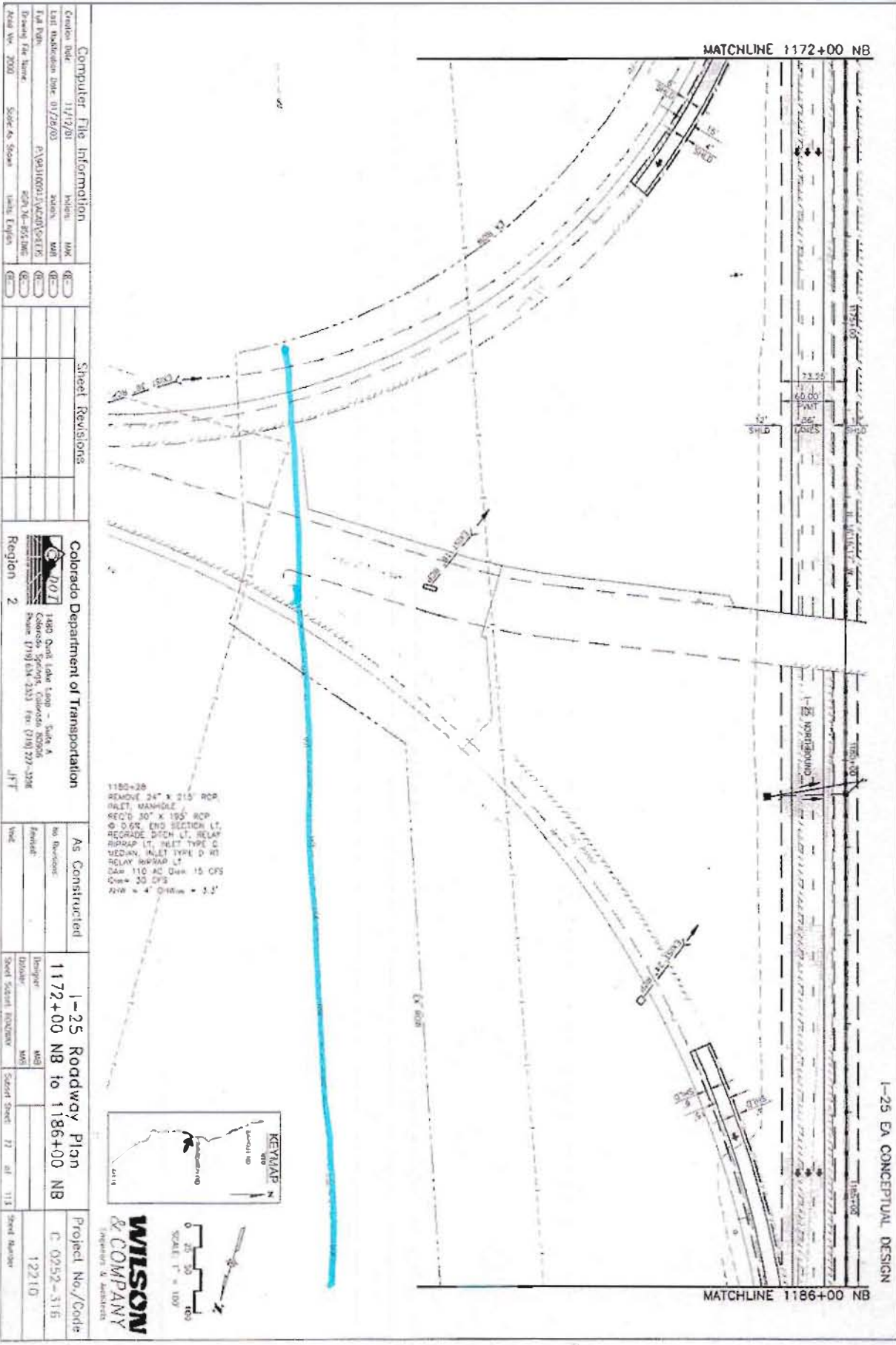
Computer File Information		Sheet Revisions	
Creation Date	11/17/2001	mk	()
Last Modification Date	01/29/01	mk	()
Full Path	P:\5810291\I\A\CONCEPTS	mk	()
Drawing File Name	1158-16-055.DWG	mk	()
Acad Ver.	2000	mk	()
Scale As Shown	Unit: English	mk	()

Colorado Department of Transportation	
Region	2
1480 Quail Lake Loop - Suite A	
Colorado Springs, Colorado 80906	
Phone: (719) 535-2553 Fax: (719) 271-3218	
JTF	

As Constructed	
1166-18	REMOVE 24" X 12"
1166-19	REMOVE 24" X 12"
1166-20	REMOVE 24" X 12"
1166-21	REMOVE 24" X 12"
1166-22	REMOVE 24" X 12"
1166-23	REMOVE 24" X 12"
1166-24	REMOVE 24" X 12"
1166-25	REMOVE 24" X 12"
1166-26	REMOVE 24" X 12"
1166-27	REMOVE 24" X 12"
1166-28	REMOVE 24" X 12"
1166-29	REMOVE 24" X 12"
1166-30	REMOVE 24" X 12"
1166-31	REMOVE 24" X 12"
1166-32	REMOVE 24" X 12"
1166-33	REMOVE 24" X 12"
1166-34	REMOVE 24" X 12"
1166-35	REMOVE 24" X 12"
1166-36	REMOVE 24" X 12"
1166-37	REMOVE 24" X 12"
1166-38	REMOVE 24" X 12"
1166-39	REMOVE 24" X 12"
1166-40	REMOVE 24" X 12"
1166-41	REMOVE 24" X 12"
1166-42	REMOVE 24" X 12"
1166-43	REMOVE 24" X 12"
1166-44	REMOVE 24" X 12"
1166-45	REMOVE 24" X 12"
1166-46	REMOVE 24" X 12"
1166-47	REMOVE 24" X 12"
1166-48	REMOVE 24" X 12"
1166-49	REMOVE 24" X 12"
1166-50	REMOVE 24" X 12"
1166-51	REMOVE 24" X 12"
1166-52	REMOVE 24" X 12"
1166-53	REMOVE 24" X 12"
1166-54	REMOVE 24" X 12"
1166-55	REMOVE 24" X 12"
1166-56	REMOVE 24" X 12"
1166-57	REMOVE 24" X 12"
1166-58	REMOVE 24" X 12"
1166-59	REMOVE 24" X 12"
1166-60	REMOVE 24" X 12"
1166-61	REMOVE 24" X 12"
1166-62	REMOVE 24" X 12"
1166-63	REMOVE 24" X 12"
1166-64	REMOVE 24" X 12"
1166-65	REMOVE 24" X 12"
1166-66	REMOVE 24" X 12"
1166-67	REMOVE 24" X 12"
1166-68	REMOVE 24" X 12"
1166-69	REMOVE 24" X 12"
1166-70	REMOVE 24" X 12"
1166-71	REMOVE 24" X 12"
1166-72	REMOVE 24" X 12"
1166-73	REMOVE 24" X 12"
1166-74	REMOVE 24" X 12"
1166-75	REMOVE 24" X 12"
1166-76	REMOVE 24" X 12"
1166-77	REMOVE 24" X 12"
1166-78	REMOVE 24" X 12"
1166-79	REMOVE 24" X 12"
1166-80	REMOVE 24" X 12"
1166-81	REMOVE 24" X 12"
1166-82	REMOVE 24" X 12"
1166-83	REMOVE 24" X 12"
1166-84	REMOVE 24" X 12"
1166-85	REMOVE 24" X 12"
1166-86	REMOVE 24" X 12"
1166-87	REMOVE 24" X 12"
1166-88	REMOVE 24" X 12"
1166-89	REMOVE 24" X 12"
1166-90	REMOVE 24" X 12"
1166-91	REMOVE 24" X 12"
1166-92	REMOVE 24" X 12"
1166-93	REMOVE 24" X 12"
1166-94	REMOVE 24" X 12"
1166-95	REMOVE 24" X 12"
1166-96	REMOVE 24" X 12"
1166-97	REMOVE 24" X 12"
1166-98	REMOVE 24" X 12"
1166-99	REMOVE 24" X 12"
1166-100	REMOVE 24" X 12"

I-25 Roadway Plan	
Station	1158+00 to 1172+00
Project No./Code	C 0252-315
Sheet No.	12210

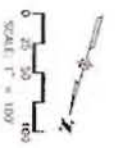
WILSON & COMPANY
 ENGINEERS & ARCHITECTS



1-25 EA CONCEPTUAL DESIGN

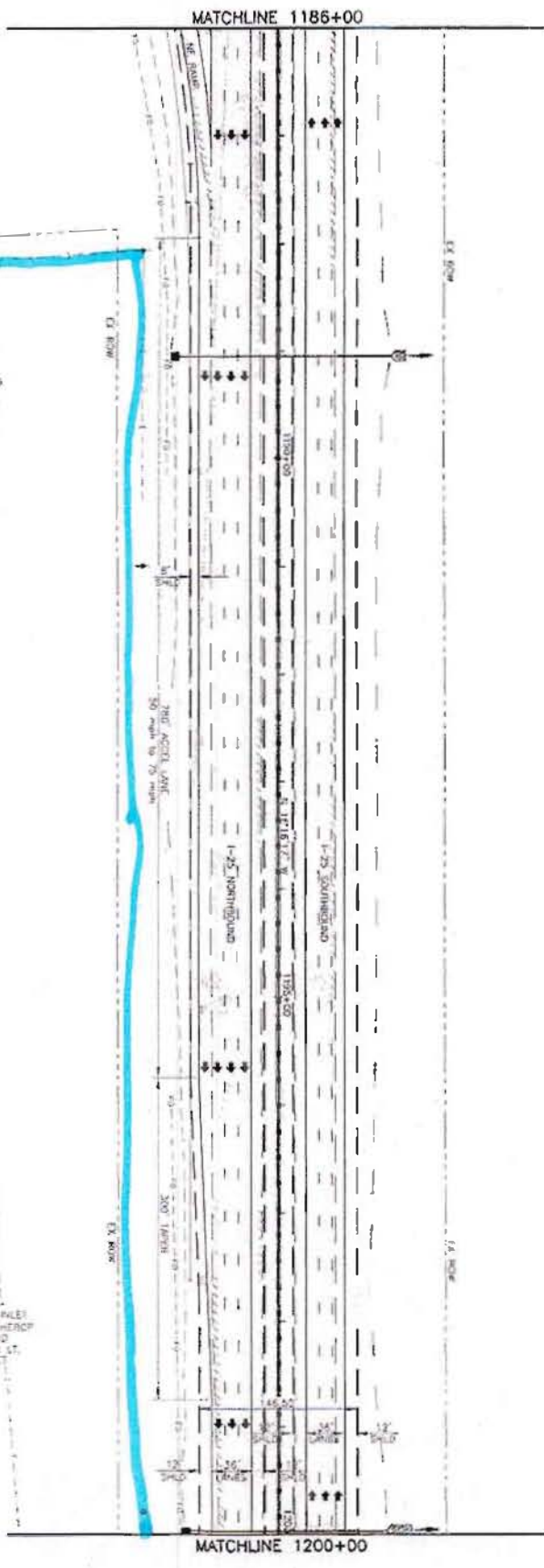
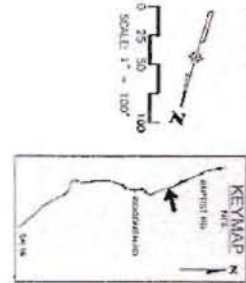
Computer File Information		Sheet Revisions		Colorado Department of Transportation		As Constructed		1-25 Roadway Plan NB		Project No./Code	
Creation Date	11/12/01	Author	MM	Checked		Region	2	Drawn		Sheet No.	12710
Last Modification Date	01/28/03	Design	MM	Reviewed		Region	2	Checked		Sheet No.	12710
File Path	F:\9310091\ACAD\9310091.dwg	Scale	AS SHOWN	Approved		Region	2	Checked		Sheet No.	12710
Drawing File Name	9310091.dwg	Scale	AS SHOWN	Approved		Region	2	Checked		Sheet No.	12710
Drawn By	Jack Engler	Scale	AS SHOWN	Approved		Region	2	Checked		Sheet No.	12710
Drawn Date	11/12/01	Scale	AS SHOWN	Approved		Region	2	Checked		Sheet No.	12710

1186+26
REMOVE 24" X 215' RCP
INLET MANHOLE
RECD 30" X 195' RCP
0 0 0 24' END SECTION LT
REGRADE DITCH LT, RELAY
RIPRAP LT, INLET TYPE C
MEDIAN, INLET TYPE D RD
RELAY RIPRAP LT
15' x 15' x 15' AC DIA 15 CFS
2' x 4' x 4' DRAIN = 3.2'



WILSON & COMPANY
ENGINEERS & ARCHITECTS

I-25 EA CONCEPTUAL DESIGN

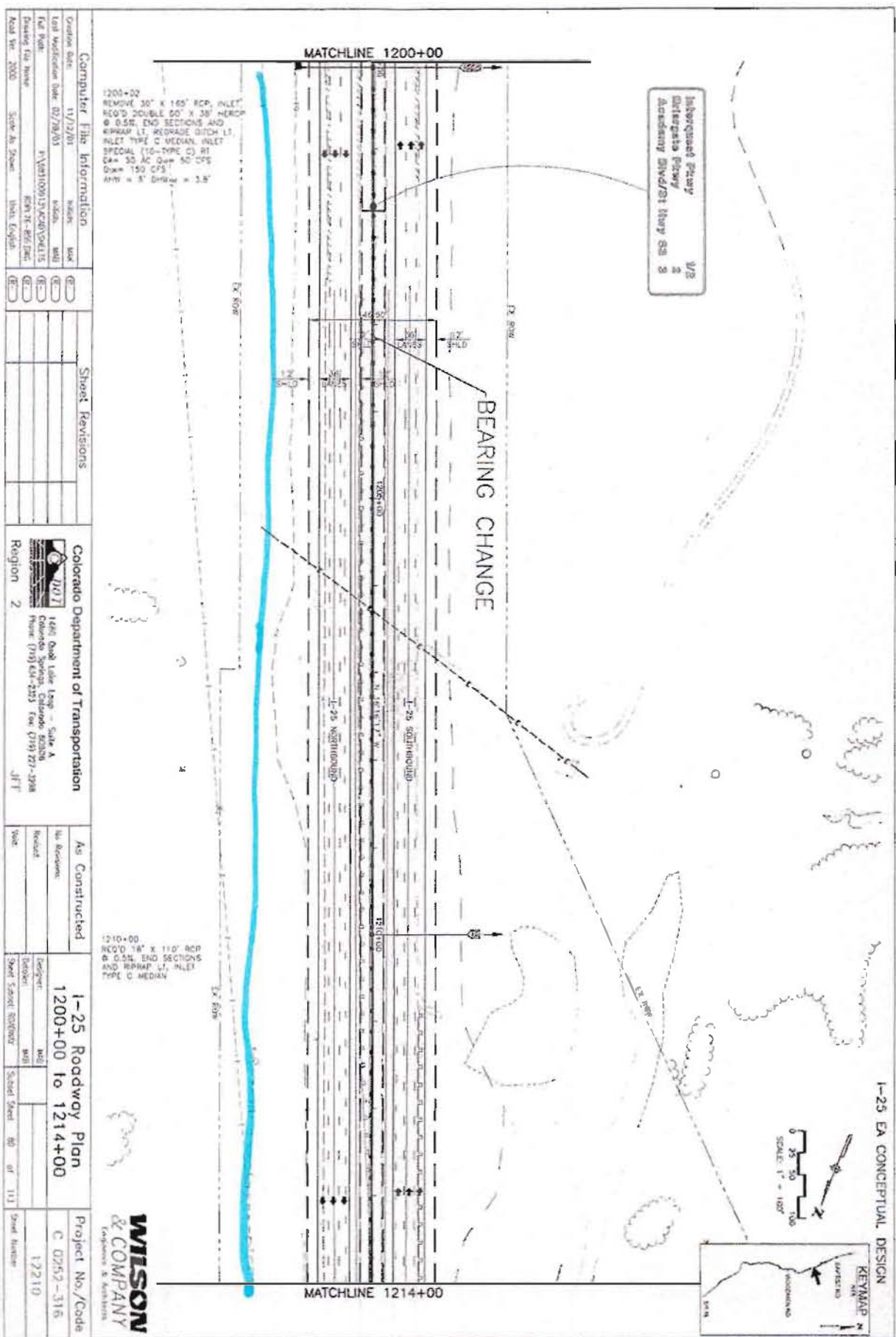


1189+00
 REMOVE 24" X 180" RCP
 INLET
 200' SECTION AND
 RIPRAP LT INLET TYPE C
 MEDIAN INLET TYPE D RT
 150' SECTION
 5' DRIVE + 3' B

1200+00
 REMOVE 30" X 165" RCP INLET
 RCP'S DOUBLE 60" X 30" H/RCP
 @ 0.50' END SECTIONS AND
 RIPRAP LT. REDUCE DITCH ST.
 INLET TYPE C MEDIAN INLET
 150' SECTION
 5' DRIVE + 3' B

Computer File Information		Sheet Revisions	
Creation Date	11/12/01	WWS	(E-1)
Last Modification Date	01/29/03	WWS	(E-2)
File Path	F:\8810091\A\CD\PLAN\13		
Drawing File Name	K0130-85-DWG		
Acad Ver.	2000	Scale As Shown	Units English
Colorado Department of Transportation		As Constructed	
Region	2	No Revisions	
1480 Quad Lake Loop - Suite A Colorado Springs, Colorado 80906 Phone: (719) 535-3313 Fax: (719) 527-3388 JFF		Revised	
I-25 Roadway Plan		Sheet	79 of 113
1186+00 to 1200+00		Sheet Scale	As Shown
Project No./Code		Wilson & Company	
C 0252-516		Engineers & Architects	
12210		Sheet Number	





Computer File Information

Order Date	11/22/01	Order	02
Last Modification Date	02/28/03	Order	02
File Name	F:\ASST1001\1200\01\01\SHEETS	Order	02
Project File Name	01\1200\01\01	Order	02
Model Year	2000	Order	02
Scale As Shown	1 inch = 40 feet	Order	02

Sheet Revisions

Colorado Department of Transportation

1400 Dahl Drive, Littleton, CO 80120
 Colorado Springs, Colorado 80906
 Phone: (719) 634-2333 Fax: (719) 271-3288
 Region 2 JFT

As Constructed

No. Revisions	
Revised	
Year	

1-25 Roadway Plan

1200+00 to 1214+00

Sheet		of	111
Sheet Number			

WILSON & COMPANY
 ENGINEERS & ARCHITECTS

Project No./Code
 C 0252-316
 12210

1200+00
 REMOVE 30" X 165" RCP INLET
 RELOC DOUBLE 60" X 38" HEMCO
 @ 0.5% END SECTIONS AND
 REPAIR LT. REGRADE DITCH LT.
 INLET TYPE C MEDIAN INLET
 SPECIAL (10-TYPE C) RT
 C+ 35 AC D+ 50 CFS
 D+ 150 CFS
 ANI = 5' DWS = 3.5'

1210+00
 REMOVE 30" X 110" RCP
 RELOC 60" X 38" END SECTIONS
 AND REPAIR LT. INLET
 TYPE C MEDIAN

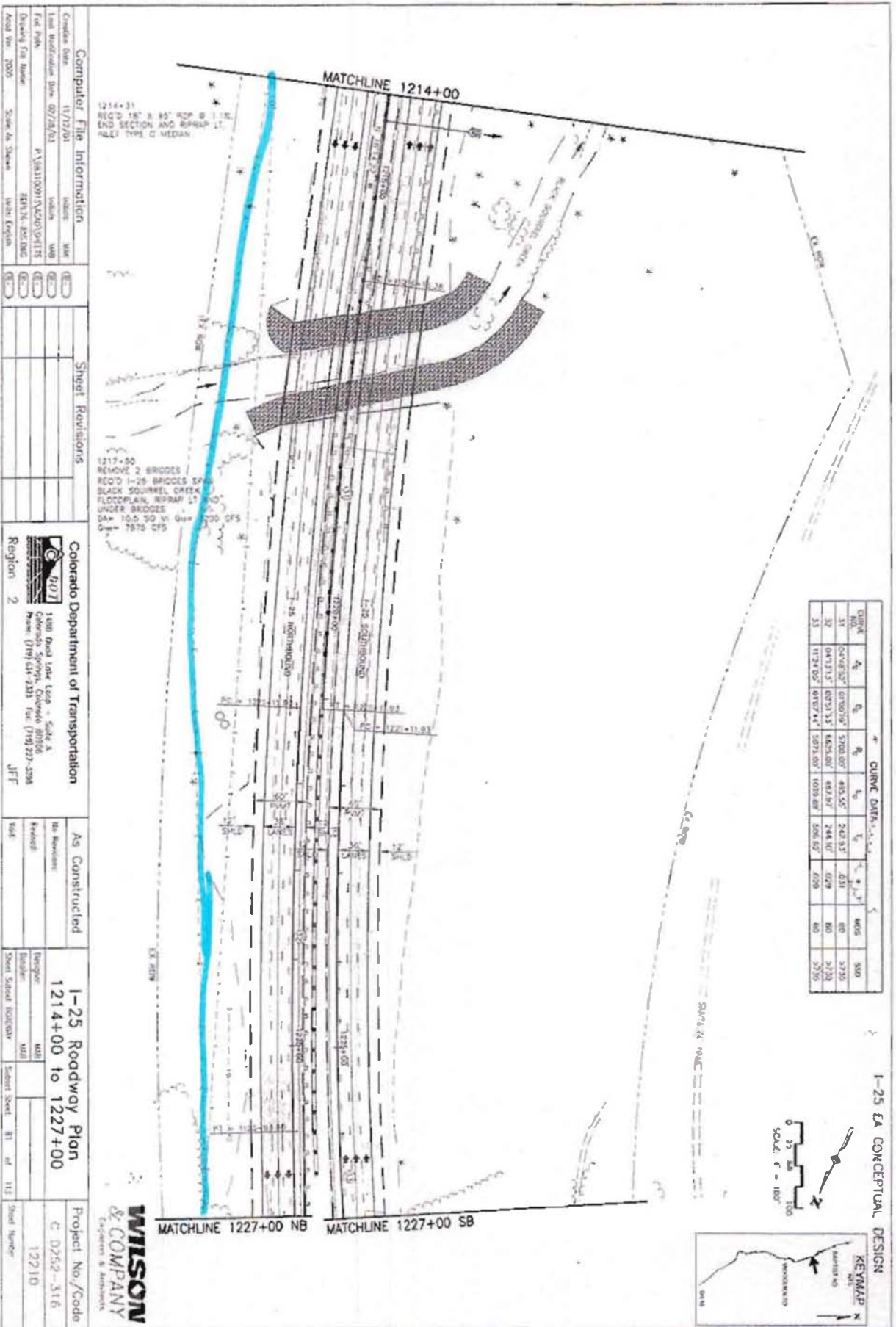
Laboratory Proxy
 Interstate Proxy
 Assembly SHV/01 Hwy SA 3
 W/3

KEYMAP

SCALE: 1" = 100'

0 25 50 100

1-25 EA CONCEPTUAL DESIGN



CURVE NO.	CURVE DATA									
	A ₁	B ₁	A ₂	B ₂	L ₁	L ₂	T ₁	T ₂	MOS	SSO
31	04748.02'	01907.09'	5708.00'	480.55'	242.83'	0.31	0.0	0.0	3730	
32	04713.17'	02913.55'	6423.00'	493.87'	244.10'	0.29	0.0	0.0	3730	
33	11247.02'	09377.44'	5078.00'	1038.88'	506.67'	0.00	0.0	0.0	3730	

Computer File Information

Created Date	1/17/03	Author	WAB
Last Modification Date	02/28/03	Checker	WAB
File Path	P:\8810091\ACAD\03\4115		
Drawing File Name	E817N.DWG		
Acad Ver	2000	Scale As Shown	WAB/EPK

Sheet Revisions

Colorado Department of Transportation

Region 2

1500 Road Loop East - Suite A
 Colorado Springs, Colorado 80906
 Phone: (719) 534-2333 Fax: (719) 227-2388

JFF

As Constructed

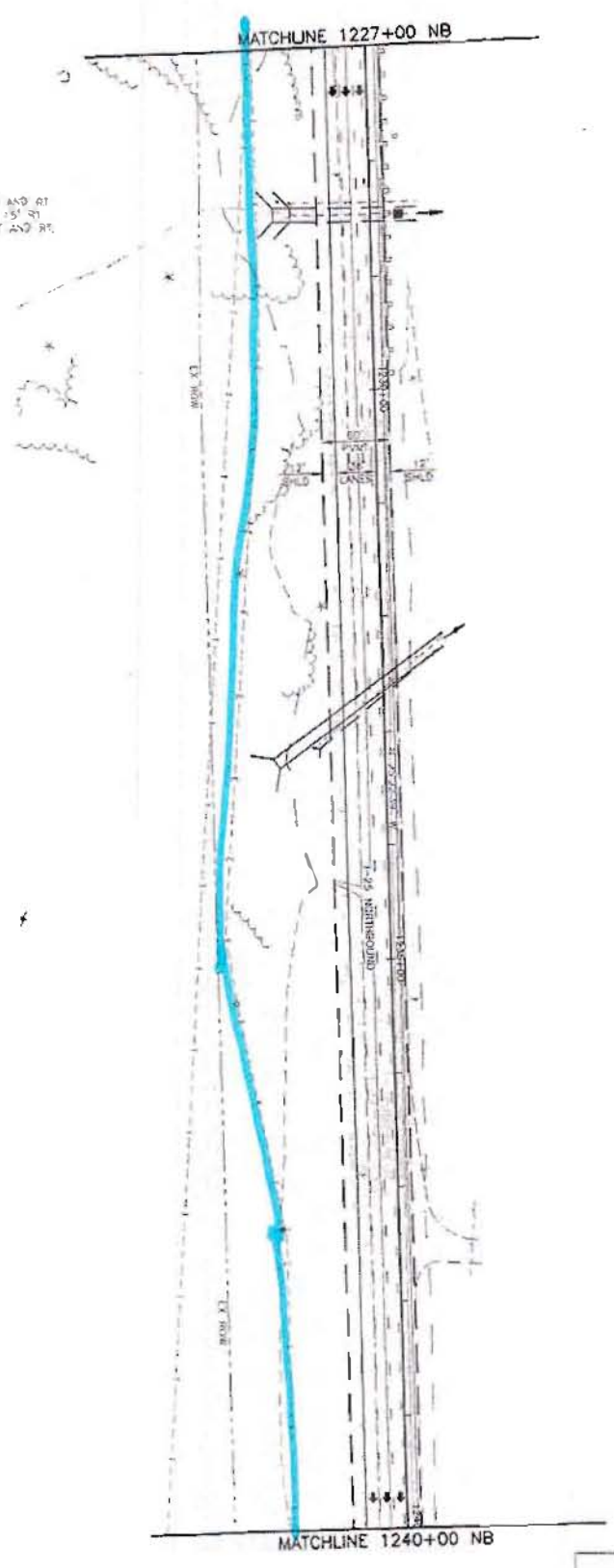
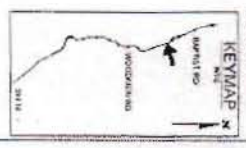
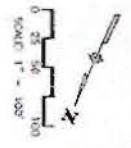
As Constructed	1-25 Roadway Plan
	1214+00 to 1227+00

Project No./Code

	C 0252-316
	12210

WILSON & COMPANY
 ENGINEERS & ARCHITECTS

1-25 EA CONCEPTUAL DESIGN



1226+45 NB - 1226+40 SB
 REMOVE SIDEWALK AND SIDEWALKS LT AND RT
 EXTEND 10' X 9' CONC 20' LT AND 15' RT
 @ 1.5% SLOPE AND SIDEWALKS LT AND RT
 REMOVE LT SIDEWALK AND SIDEWALKS
 INLET TYPE D MANHOLE
 DIA = 500 AC DIA = 425 CFS
 RT R/W 15' S
 RT R/W 15' S
 RT R/W 15' S

1235+55 NB - 1231+55 SB
 REMOVE SIDEWALK AND SIDEWALKS
 REDUC 10' X 9' CONC @ 2.7%
 SIDEWALKS LT AND RT
 RT R/W 15' S
 DIA = 500 AC DIA = 500 CFS
 DIA = 500 AC
 DIA = 500 AC
 DIA = 500 AC
 DIA = 500 AC

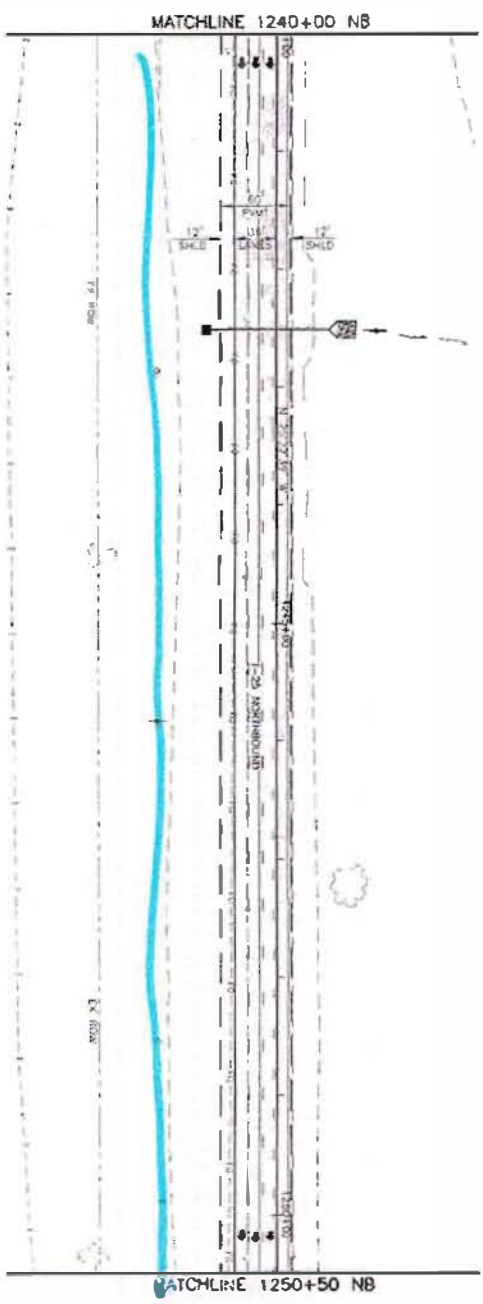
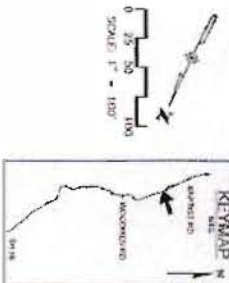
WILSON & COMPANY
 Engineers & Architects

Computer File Information		Sheet Revisions	
Creation Date	11/17/01	Revision	001
Last Modification Date	02/28/03	Revision	002
File Path	F:\ASST\1001\1\ACAD\DWG\1227+00 NB.dwg	Revision	003
Drawing File Name	1227+00 NB.dwg	Revision	004
Drawn By	SKM	Revision	005
Scale	As Shown	Revision	006
Drawn Date	11/17/01	Revision	007

Colorado Department of Transportation		As Constructed	
Region	2	Revisions	001
Project	1483 Dual Lane Loop - State A	Revisions	002
Office	Colorado Springs, Colorado 80905	Revisions	003
Phone	(719) 531-2333 Fax (719) 521-2658	Revisions	004
Project Engineer	JFF	Revisions	005

1-25 Roadway Plan		Project No./Code	
1227+00 NB to 1240+00 NB		C 0255-316	
Drawn By	SKM	Sheet No.	12210
Checked By	SKM	Sheet Count	of 113
Design Firm	WILSON & COMPANY	Sheet Number	

I-25 EA CONCEPTUAL DESIGN

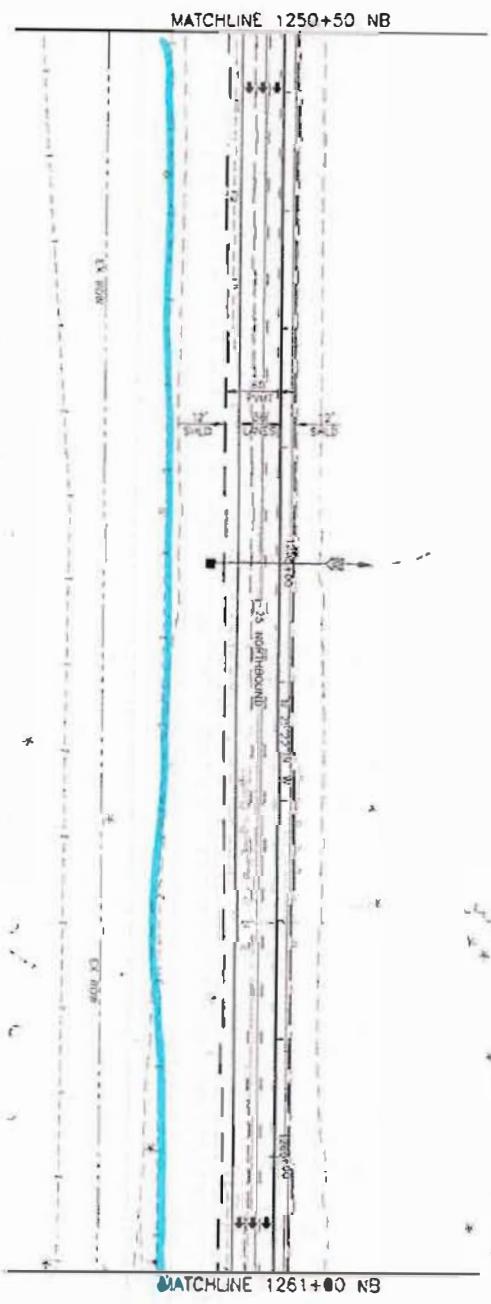
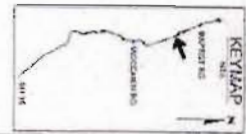


1240+51 NB
 REMOVE 24" X 80' RCP
 REDD 26" X 105' RCP
 @ 1.0% GND SECTION AND
 RRRAP LT. REGRADE GISH
 LT. WALT TYPE D RT
 DL+ 20 AC 24+ 22 CPS
 @ 5% 50 CPS
 AW • 5' 0"RW • 4.2'

Computer File Information		Sheet Revisions		Colorado Department of Transportation		As Constructed		I-25 Roadway Plan		Project No./Code	
Creation Date	11/17/01	Issue:	001	1400 Court Lady Lane - Suite A Colorado Springs, Colorado 80905 Phone: (719) 634-2303 Fax: (719) 277-5998 JFF	No. Issues:	1240+00 NB to 1250+50 NB	Design: Date:	Date:	Sheet Count: 113 of 113	Sheet:	Project No./Code C 0252-315 12210
Last Modification Date	02/28/01	Issue:	002		Revised:						
Full Path:	P:\081001\VECD\PROJECT	Issue:	003		Notes:						
Drawing File Name:	KD218-055.DWG	Issue:	004	Scale:	1" = 100'	Scale:	1" = 100'	Scale:	1" = 100'	Scale:	1" = 100'
Drawn By:	Shane M. Thomas	Issue:	005	Region:	2	Scale:	1" = 100'	Scale:	1" = 100'	Scale:	1" = 100'

WILSON & COMPANY
 Engineers & Architects

1-25 EA CONCEPTUAL DESIGN

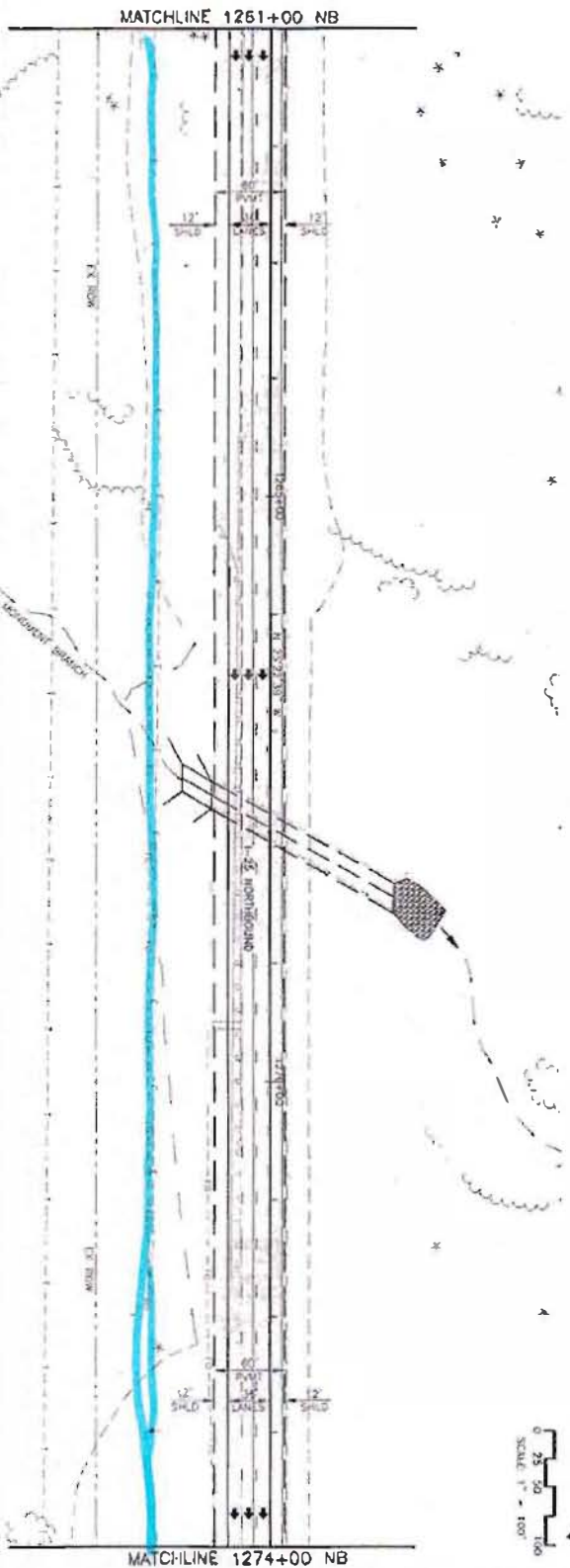


1252+80 NB
 REMOVE 24" X 25 RCP
 REB 35" X 24" X 180' RCBCP
 D 10X 560 SECTION AND
 10' RAMP TO BEGRAD DITCH
 1.5' RCP 24" X 25" @ 10'
 1.5' RCP 24" X 25" @ 10'
 1.5' RCP 24" X 25" @ 10'
 1.5' RCP 24" X 25" @ 10'
 1.5' RCP 24" X 25" @ 10'

Computer File Information		Sheet Revisions		Colorado Department of Transportation		As Constructed		1-25 Roadway Plan		Project No./Code	
Customer Name:	11/12/00	Issue:	001	Region:	2	No. Revisions:	1	Designer:	WJL	Project No./Code:	C 0252-316
Last Modification Date:	02/28/03	Issue:	001	Region:	2	Revised:		Checker:	WJL	Sheet No.:	12210
File Name:	F:\ASSTON\ASSTON\ASSTON	Issue:	001	Region:	2	Spec:		Sheet Submitter:		Sheet No.:	111
Drawing File Name:	02/17/03-05-001	Issue:	001	Region:	2			Sheet Submitter:			
Asst. No.:	2000	Scale As Shown:	1/4" = 1'-0"	Region:	2			Sheet Submitter:			

WILSON & COMPANY
 Engineers & Architects

1-25 EA CONCEPTUAL DESIGN



1261+00
 1262+00
 1263+00
 1264+00
 1265+00
 1266+00
 1267+00
 1268+00
 1269+00
 1270+00
 1271+00
 1272+00
 1273+00
 1274+00

Computer File Information		Sheet Revisions		Colorado Department of Transportation		As Constructed		1-25 Roadway Plan		Project No./Code		
Creation Date	11/11/01	UW	(E)	 4800 Good Loop Loop - Suite A Denver, Colorado 80202 Phone: (303) 439-3000 Fax: (303) 439-3003 JFF	No. Invention	1261+00 NB to 1274+00 NB	 Engineers & Architects	Designer	WJL	C 0252-316 12210		
Last Modification Date	02/16/03	WJL	(E)		Revised			Drawn	WJL			
File Path	F:\YASU001\1\WCD\PROJECTS	(E)			Sheet Label	Equation		Sheet	35		of	113
Drawing File Name	1261-25-000	(E)			Scale	Sheet		35	of		113	Sheet Number
Drawn by	2000	Scale	As Shown		Unit	English						

Computer File Information

Created date	11/17/01	Author	WAB
Last workspace date	02/28/03	Editor	WAB
File Path	F:\WORK\1001\1274+00 NB\1274+00 NB.dwg		
Drawing File Name	1274+00 NB.dwg		
Plot No.	Sheet No.	Sheet Name	Sheet Region

Sheet Revisions

Colorado Department of Transportation



1480 Quail Lake Loop - Suite A
 Colorado Springs, Colorado 80906
 Phone: (719) 524-3101 Fax: (719) 227-4188

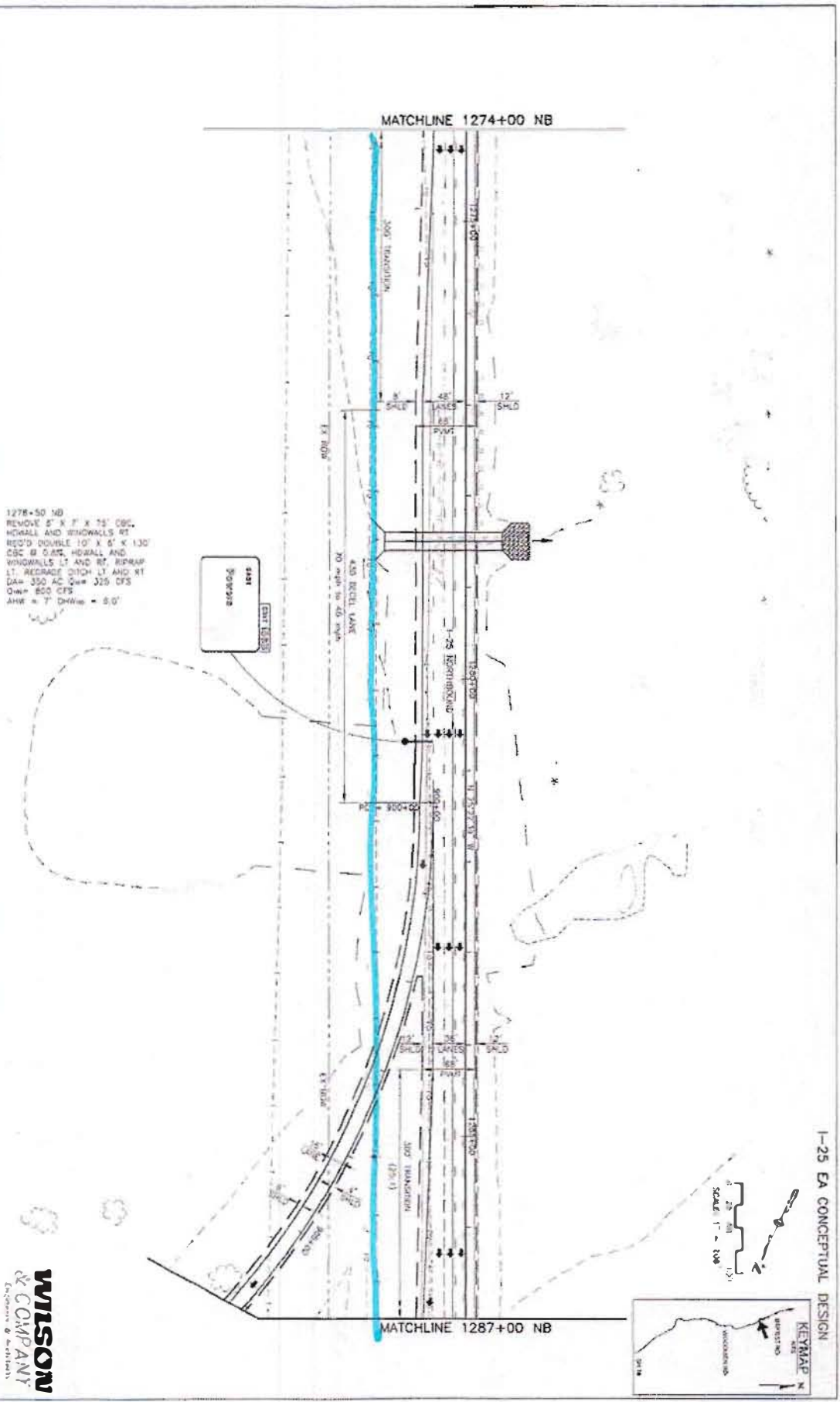
Region 2

JTF

As Constructed

No. Revisions	
Revised	
Year	

Design	1274+00 NB to 1287+00 NB	Project No./Code	C 0232-31B
Checker	WAB	Sheet No.	12210
Sheet Name	1274+00 NB	Sheet Size	18" x 36" at 1/4" = 1' = 11.2
Sheet Number		Sheet Number	



WILSON & COMPANY
 CONSULTANTS

1-25 EA CONCEPTUAL DESIGN

Computer File Information

Creation Date	11/9/01	width	1/8"
Last Modification Date	02/29/03	height	1/8"
File Path	P:\18160913\121210\121210.dwg		
Drawing File Name	121210.dwg	Units	English
Acad Ver	2000	Scale As Shown	Units English

Sheet Revisions

Colorado Department of Transportation



1480 Grant Loop - Suite A
 Colorado Springs, Colorado 80906
 Phone (719) 544-2221 Fax (719) 237-2295
 JFF

Region 2

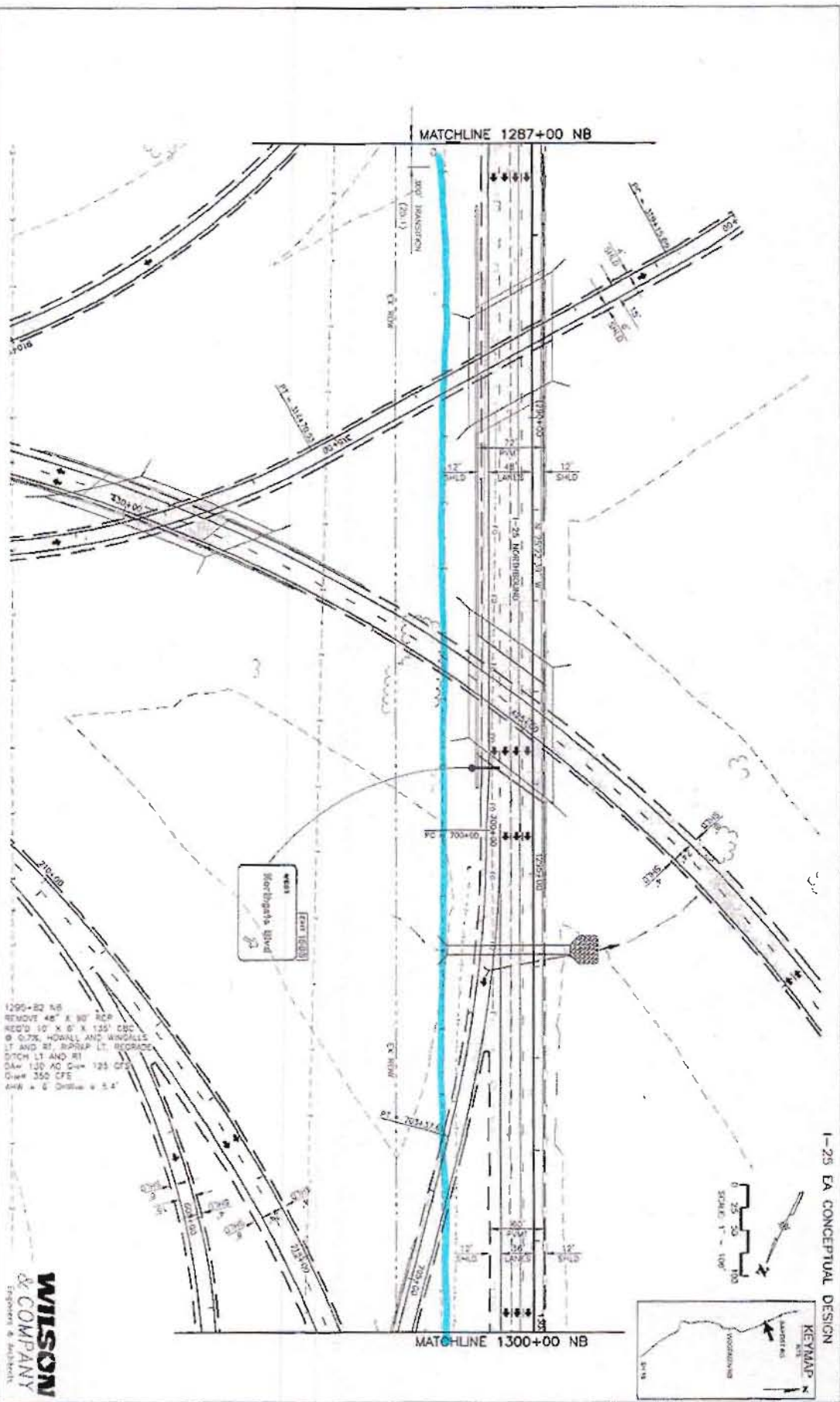
As Constructed

No. of Stations	
Releases	
Notes	

1-25 Roadway Plan

Project No./Code	C 0252-316
Sheet No.	12210
Scale	Sheet 03 of 113

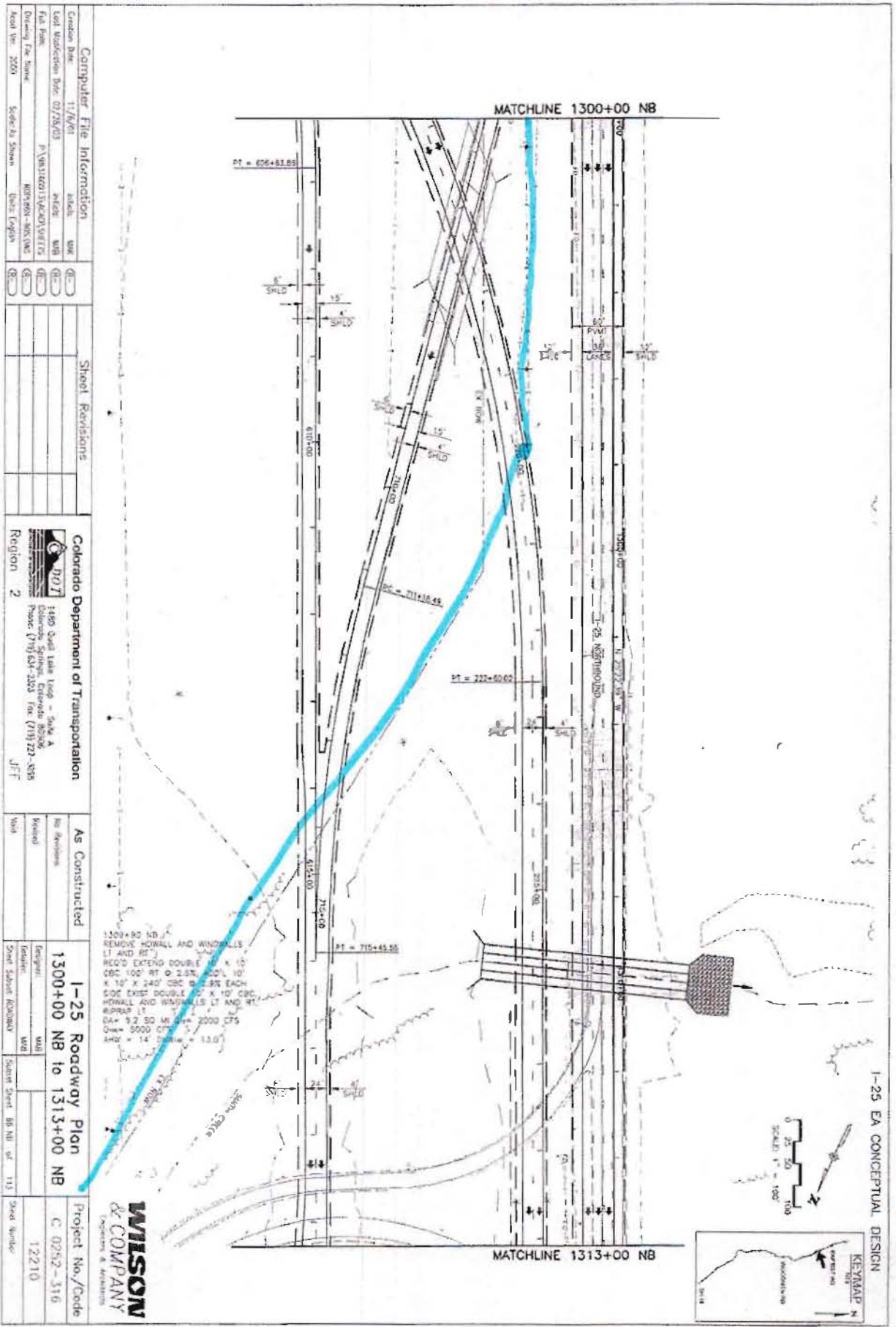
WILSON & COMPANY
 ENGINEERS & ARCHITECTS



I-25 EA CONCEPTUAL DESIGN

KEYMAP
 I-25 NB
 PROJECT LOCATION

SCALE: 1" = 100'



Computer File Information	
Creation Date	11/8/01
Last Modification Date	02/28/03
File Name	P:\MS10011\ACAD\DWG\11500-0001.DWG
Drawing File Name	11500-0001.DWG
Plot Year	2001
Scale to Show	Units English

Sheet Revisions	

Colorado Department of Transportation



1490 Sola Lake Road - Suite A
 Colorado Springs, Colorado 80906
 Phone: (719) 634-3000 Fax: (719) 221-8584
 JFF

As Constructed	
No. Revisions	
Revised	

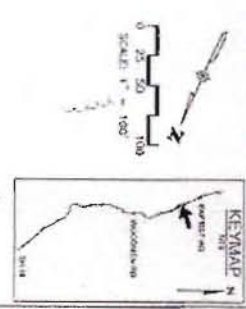
1-25 Roadway Plan
1300+00 NB to 1313+00 NB

Project: Sheet: 88 of 113

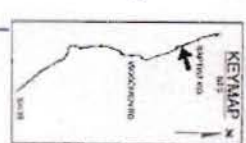
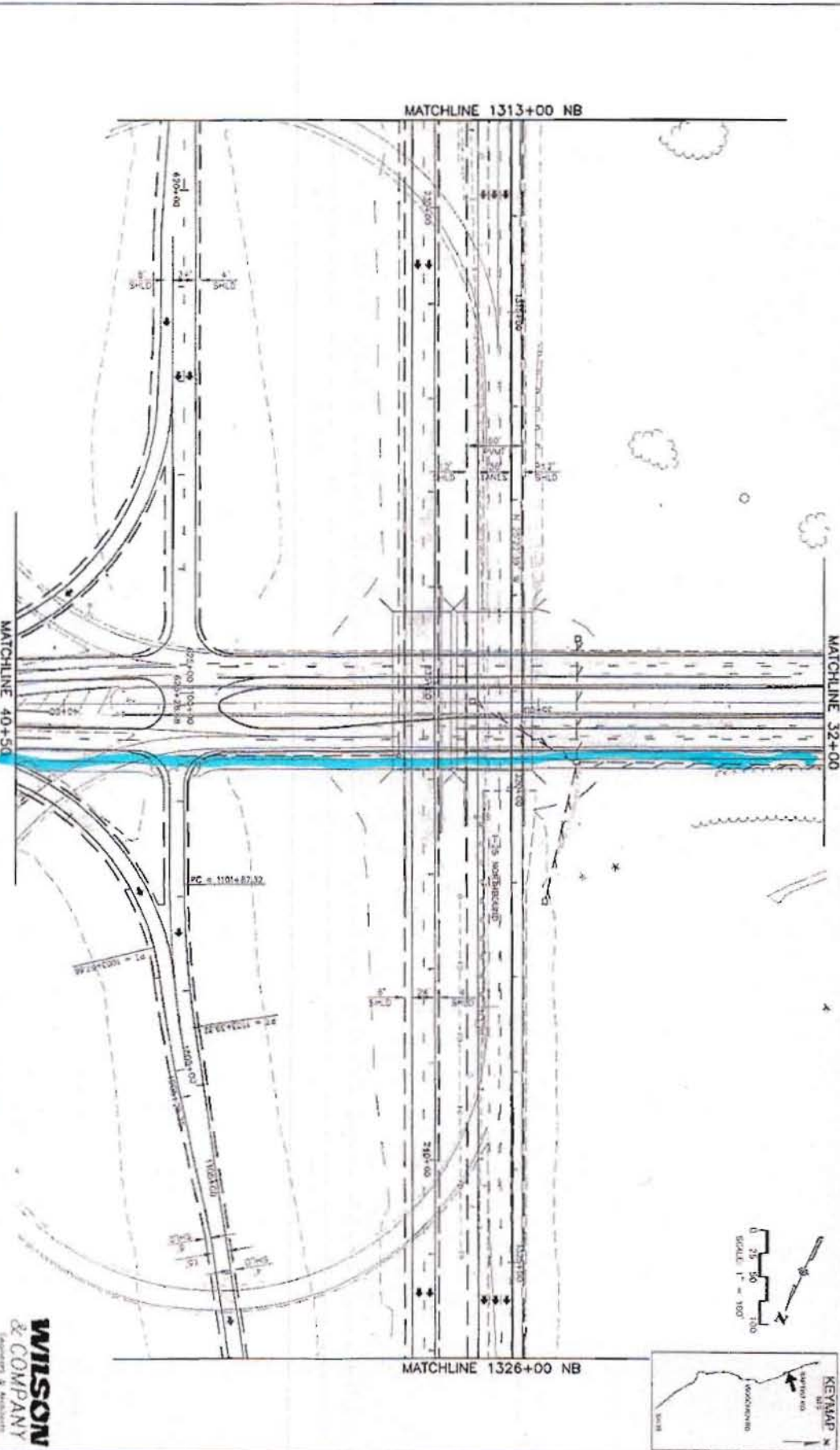
Project No./Code	
C 0252-316	
12210	

WILSON & COMPANY
 Engineers & Architects

1-25 EA CONCEPTUAL DESIGN



Computer File Information		Sheet Revisions		Colorado Department of Transportation		As Constructed		I-25 Roadway Plan		Project No./Code	
Creation Date	11/29/03	DATE		1400 Good Lake Lane - Suite A		No Erections		1313+00 NB to 1326+00 NB		C 0252-316	
User/Mod/Drawn	SAK/202/MS	BY		Colorado Springs, Colorado 80906		Revised				12210	
File Path	P:\V\110911\K\K\K\G\G\G\G\G\G	CHK		Phone (719) 527-2322 Fax (719) 271-1356		Drawn		JFF		Sheet No./Code	
Drawing File Name	803100-1025.DWG	APP		Region 2		Sheet No./Code		111		111	
Auto Ver	2003	DATE				Sheet No./Code		111		111	



I-25 EA CONCEPTUAL DESIGN


WILSON & COMPANY
Engineers & Architects

Computer File Information

Condition:	11/7/2011	Author:	WJG
Last Modification Date:	01/28/2011	Units:	US
File Path:	F:\PROJECTS\11111111\11111111.dwg		
Drawing File Name:	11111111.dwg		
Acad Ver:	2000	Scale As Space:	Units: English

Sheet Revisions

Colorado Department of Transportation



1450 East Lake Loop - Suite A
 Golden, Colorado 80601
 Phone: (303) 439-2323 Fax: (303) 439-2398
 Region 2 J.F.F.

As Constructed

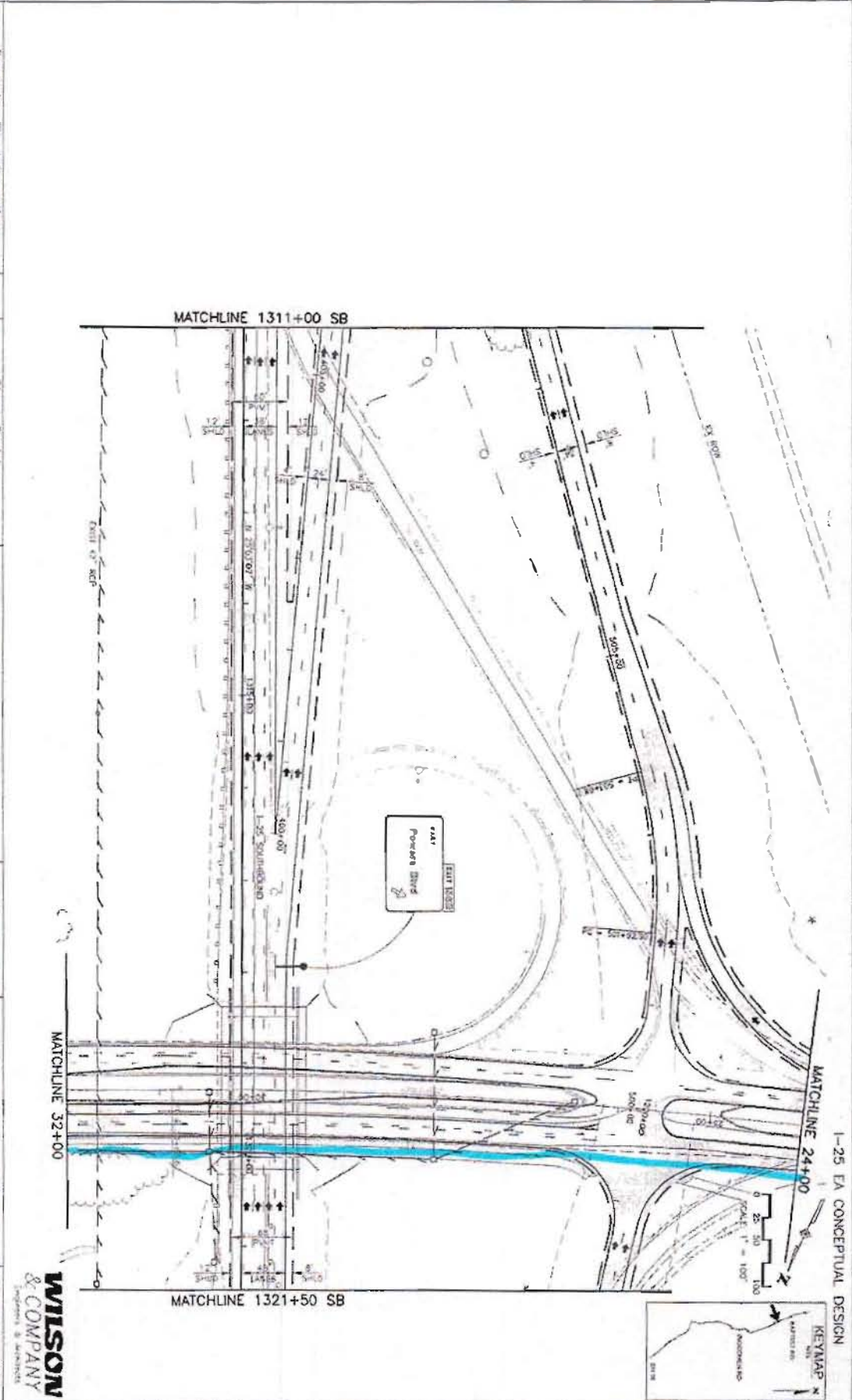
No. Revisions:	
Revised:	

1-25 Roadway Plan SB

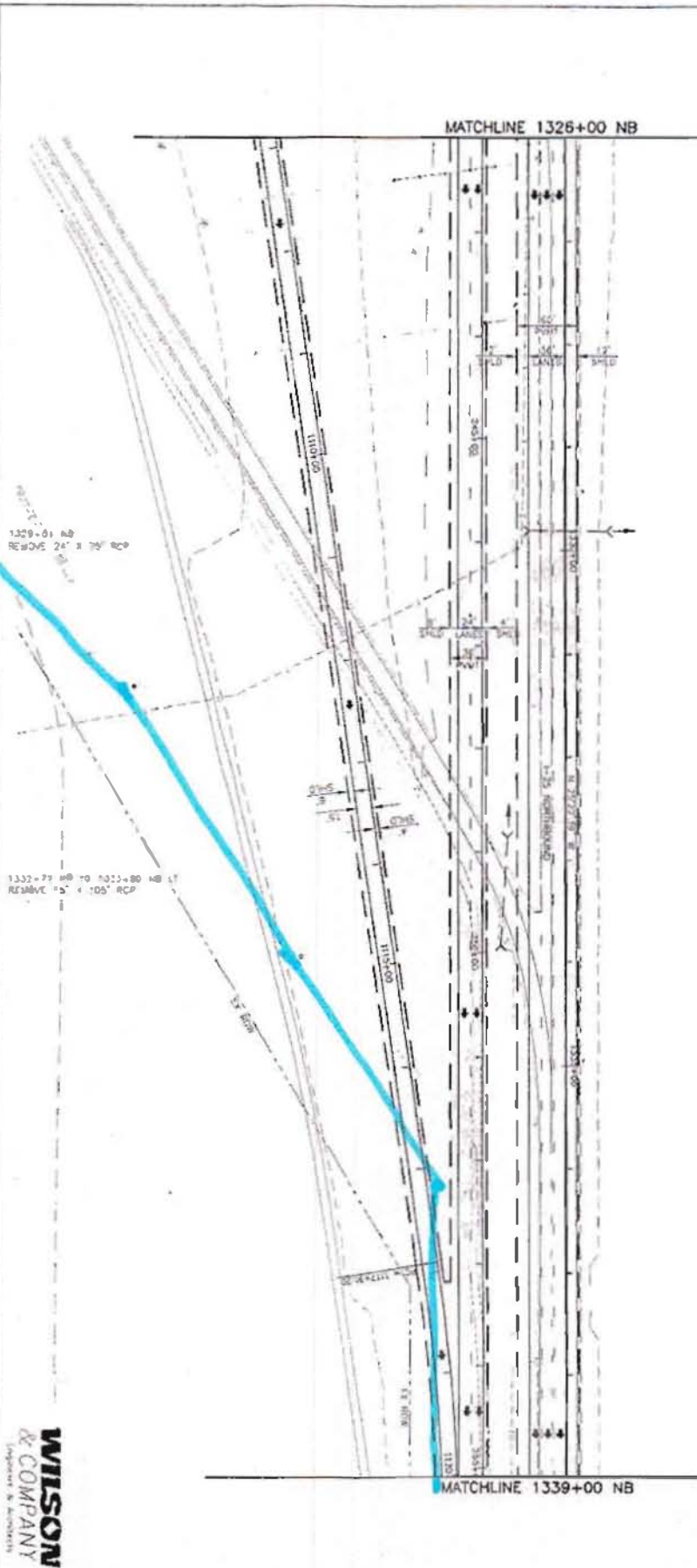
Designer:	WJG
Checker:	WJG
Sheet Count:	89 of 113

Project No./Code

	C 02552-316
	12210



Computer File Information		Sheet Revisions	
Drawn by: 11/7/01	Scale: 1/4" = 1'-0"	1	11/7/01
Proj. No.: 03/78/61	W/S: 11/7/01	2	11/7/01
File Path: P:\030109\1\VCAD\04ETS	W/S: 11/7/01	3	11/7/01
Drawing Title: 03/78/61-01/01	W/S: 11/7/01	4	11/7/01
Sheet No.: 2000	Sheet of: 2000	5	11/7/01



1-25 EA CONCEPTUAL DESIGN

SCALE: 1" = 100'

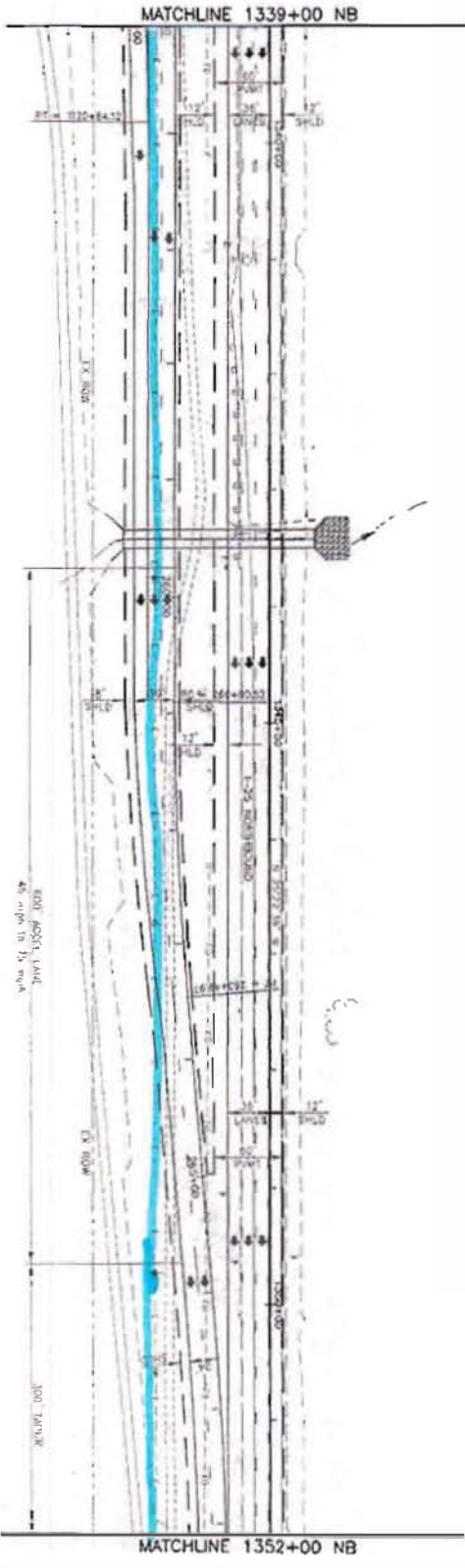
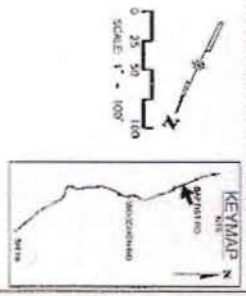
KEYMAP

WILSON & COMPANY
Imaging & Graphics

Colorado Department of Transportation	
1600 Good Lake Loop - Suite A	Region 2
Colorado Springs, Colorado 80906	
Phone: (719) 534-2233 Fax: (719) 527-3398	J.F.F.

As Constructed	1-25 Roadway Plan	Project No./Code
No. Revisions:	1326+00 NB to 1339+00 NB	C 0252-316
Revised:	Design: W/S	12/10
Used:	Sheet Size: Regular	Sheet No.: 111
	Sheet Size: 30" NB of 111	

1-25 EA CONCEPTUAL DESIGN

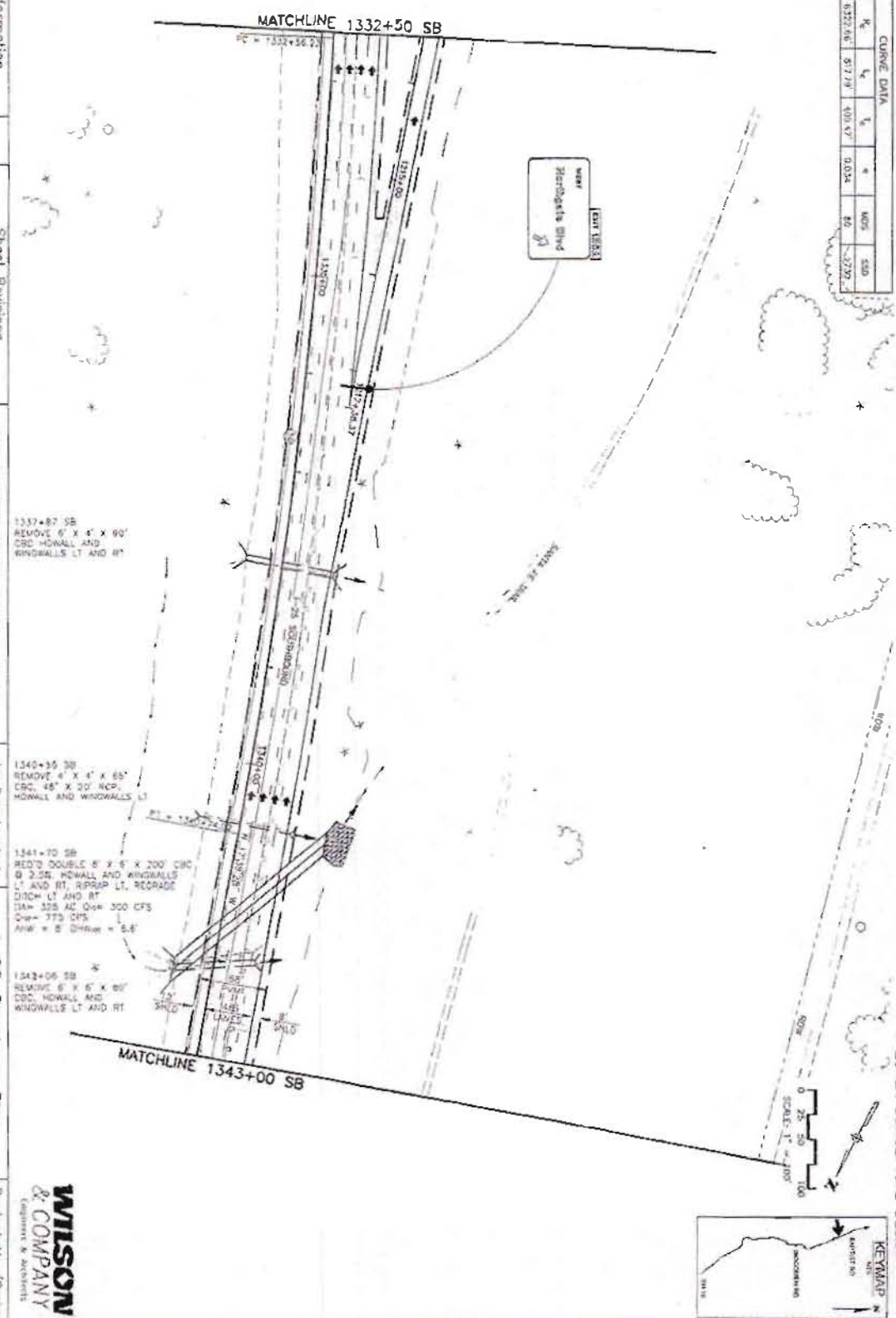


1343+41 NB
 REMOVE 6' x 7' x 75' CONC
 HOWALL AND WINDWALLS RT
 ROAD DOUBLE 6' x 6' x 147' CONC
 @ 0.7% HOWALLS AND WINDWALLS
 LT AND RT. W/WRAP LT. RECONSTRUCT
 15" CONC LT AND RT. REALIGN DRAIN RT
 DAW = 310 AC Curb 310 CFS
 DAW = 700 CFS
 ASP = 7" Depth = 5.5'

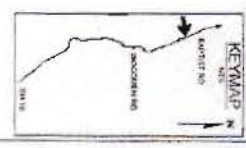
Computer File Information		Sheet Revisions	
Creation Date	11/17/01	Issue	01
Last Modification Date	07/26/05	Issue	02
File Path	F:\18110001\2\CONC\060115	Issue	03
Drawing File Name	0291916-21.DWG	Issue	04
Issue No.	000	Issue	05
Scale As Shown	units: English		
Colorado Department of Transportation			
1460 Good Lake Lane - Suite A Colorado Springs, Colorado 80926 Phone: (719) 524-3293 Fax: (719) 271-3298 JFF			
As Constructed		1-25 Roadway Plan	
No. Revisions	0	Sheet No.	1339+00 NB to 1352+00 NB
Revised		Scale	AS SHOWN
Total		Sheet Count	91 of 113
		Project No./Code	
		C 0252-316	
		Sheet Number	
		122710	



CURVE DATA									
CHAIN	Δ	R_c	R_e	L_c	L_e	α	MOS	SAD	
20	107°24'30"	6039.32'	6322.66'	917.79'	101.57'	0.034	60	-2.29'	



Computer File Information		Sheet Revisions		Colorado Department of Transportation		As Constructed		1-25 Roadway Plan SB		Project No./Code	
Creation Date:	11/17/2010	Index:	100	Logo:	CDOT	Revised:		Degree:	1332+50 SB to 1343+00 SB	C:	0252-31B
Last Modification Date:	01/20/2013	Notes:	100	Region:	2	Scale:	1" = 100'	Stationing:	SB		12210
File Path:	F:\PROJECTS\1332+50\1332+50\1332+50.dwg	Drawn:	WJE	Checked:	JFF	Sheet Count:	91 SB of 113	Sheet Number:			
Drawing File Name:	1332+50-1343.dwg	Units:	English								
Sheet No.:	2003	Scale:	As Shown								



Computer File Information

Creation Date:	11/12/09	Author:	WJK
Last Modification Date:	01/29/10	Checker:	WJK
File Path:	P:\031009\1\WAD\DWG\15	Plotter:	HP DesignJet 5000
Plotting File Name:	1552-1365.dwg	Acad Ver.:	2000
Acad Ver.:	2000	Scale:	As Shown

Sheet Revisions

Rev. No.	Description

Colorado Department of Transportation



1480 Goad Lake Loop - Suite A
 Colorado Springs, Colorado 80906
 Phone: (719) 654-3232 Fax: (719) 277-5099

Region 2

AS Constructed

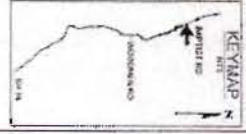
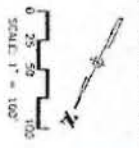
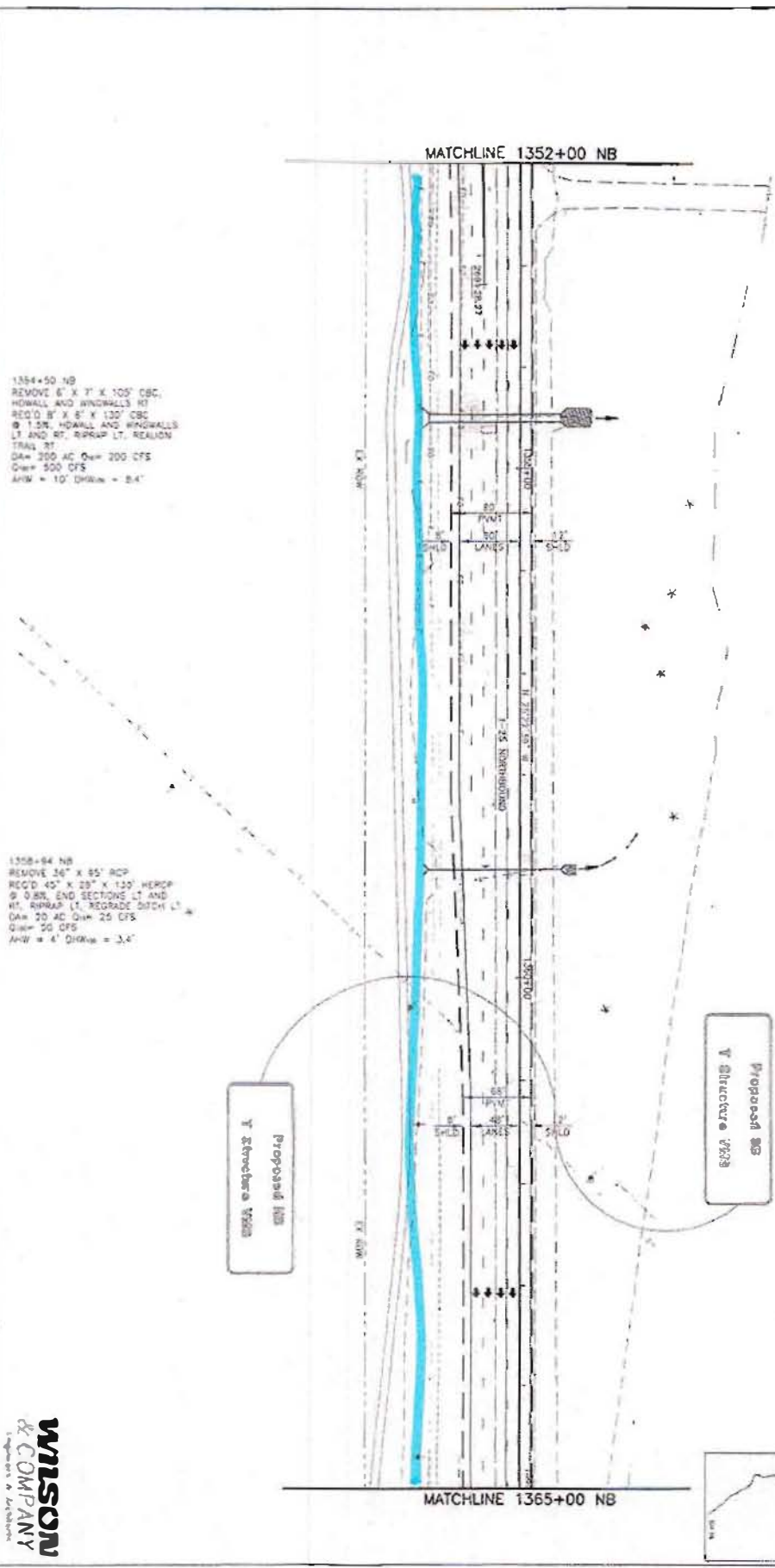
No. Revisions:	
Revised:	
Noted:	

1-25 Roadway Plan

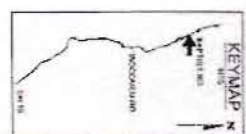
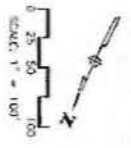
Project No./Code	G 0252-316
Sheet No.	12710
Sheet Title	1352+00 NB to 1365+00 NB
Sheet Size	32" x 44"
Scale	1" = 100'

WISON & COMPANY

Engineers & Architects



CURVE DATA									
CURVE NO.	Δ	R_c	P_c	L_c	T_c	Δ	MUS	SD	SLD
27	0°44'11"	01760.33'	5077.23'	762.86'	204.84'	0°04'	60	0.04	2010



I-25 EA CONCEPTUAL DESIGN

Computer File Information		Sheet Revisions	
Creation Date	11/17/01	WV	(C)
Last Modification Year	01/09/03	WV	(C)
File Path	F:\VIA\I25\I25\CONCEPTS	WV	(C)
Drawing File Name	1365+00-25.dwg	WV	(C)
Acad Ver.	2000	WV	(C)

Colorado Department of Transportation

1489 Quail Lake Loop - Suite A
 Colorado Springs, Colorado 80906
 Phone: (719) 534-2353 Fax: (719) 521-4298
 J.F.F.

Region 2

As Constructed	
No. Revisions:	0
Revised:	
Used:	

I-25 Roadway Plan		Project No./Code	
1365+00 to 1378+00		C 0252-316	
Design:	WV	Sheet No.:	12210
Checked:		of	113
Sheet Title/Number:		Sheet Number:	

WILSON & COMPANY
 Engineers & Architects

1375+94
 REGRADING - SMALL AND WINDSHIELD
 LT AND RT
 REGRADING EXIST DOUBLE
 10' x 10' C&G 45' LT AND
 50' RT @ 0.7% - SMALL AND
 WINDSHIELD LT AND RT, REGRADING
 LT REGRADING 120' LT AND RT,
 REGRADING 120' RT
 2.0 30 M G&W 920 CFS
 1200 CFS
 8' x 8' 1.7
 1.7
 12.0'

I-25 EA CONCEPTUAL DESIGN



1379+50
 REMOVE 4' x 4' x 130' CBL
 42" x 25" CSP HOHALL AND
 WINDSHIELDS LT
 REQ'D 55' x 34' x 230' -H/RCP
 1.7% FND SECTIONS LT AND
 RT, INLET TYPE C MEDIAN, R/RAMP
 1% REGRADE 37CH RT, REALIGN
 TRAIL RT
 Q= 30 AD Q= 35 CFS
 Q= 75 CFS
 SW = 5' D=16' + 3'

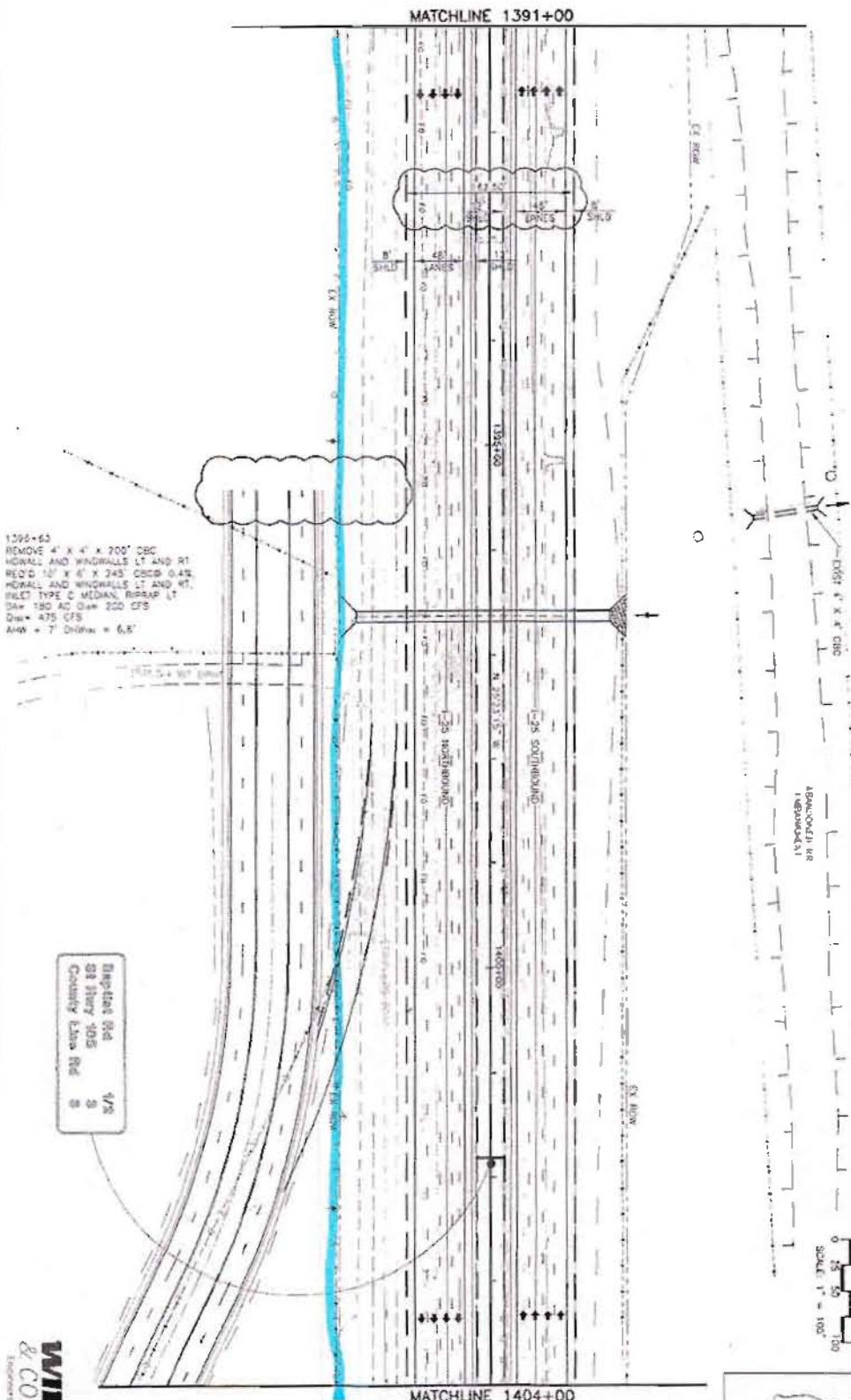
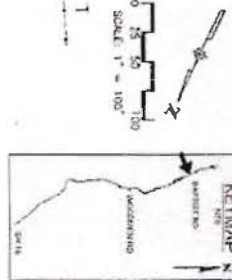
1385+85
 REMOVE 24' x 4' x 60' RCP,
 18" RT

1378+23
 REMOVE 4' x 4' x 250' CBL
 SMALL AND WINDSHIELDS LT AND RT
 REQ'D 70' x 45' x 280' -H/RCP
 1.7% FND SECTIONS LT AND
 RT, R/RAMP LT, INLET TYPE C (TRIPLE)
 LT, INLET TYPE C (TRIPLE)
 1% REGRADE 37CH RT, REALIGN
 TRAIL RT
 Q= 30 AD Q= 35 CFS
 Q= 75 CFS
 SW = 5' D=16' + 3'

Computer File Information		Sheet Revisions		Colorado Department of Transportation		As Constructed		1-25 Roadway Plan		Project No./Code	
Create Date	1/17/01	WJK		Region	2	As Reviewed		Design	WJK	Sheet No.	113
Last Modification Date	8/10/01	WJK		Region	2	Checked		Drawn	WJK	Sheet Title	1-25 Roadway Plan
File Path	P:\13781000\13781000.DWG	WJK		Region	2	Scale		Sheet No.	113	Project No./Code	C 0252-316
Drawn By Name	WJK	WJK		Region	2	Scale		Sheet Title	1-25 Roadway Plan	Project No./Code	C 0252-316
Drawn On	1/17/01	WJK		Region	2	Scale		Sheet Title	1-25 Roadway Plan	Project No./Code	C 0252-316
Drawn On	1/17/01	WJK		Region	2	Scale		Sheet Title	1-25 Roadway Plan	Project No./Code	C 0252-316
Drawn On	1/17/01	WJK		Region	2	Scale		Sheet Title	1-25 Roadway Plan	Project No./Code	C 0252-316
Drawn On	1/17/01	WJK		Region	2	Scale		Sheet Title	1-25 Roadway Plan	Project No./Code	C 0252-316
Drawn On	1/17/01	WJK		Region	2	Scale		Sheet Title	1-25 Roadway Plan	Project No./Code	C 0252-316
Drawn On	1/17/01	WJK		Region	2	Scale		Sheet Title	1-25 Roadway Plan	Project No./Code	C 0252-316

WILSON
 & COMPANY
 Engineers & Architects

1-25 EA CONCEPTUAL DESIGN



1394-65
 REMOVE 4' X 4' X 200' CBC
 HOWALL AND WINDWALLS LT AND RT
 REDD 10' X 6' X 245' CBCS 0.4%
 HOWALL AND WINDWALLS LT AND RT
 INLET TYPE C MEDIAN ROADWAY LT
 15' X 15' X 15' Q= 200 CFS
 Q= 435 CFS
 AHW = 7' DROW = 6.8'

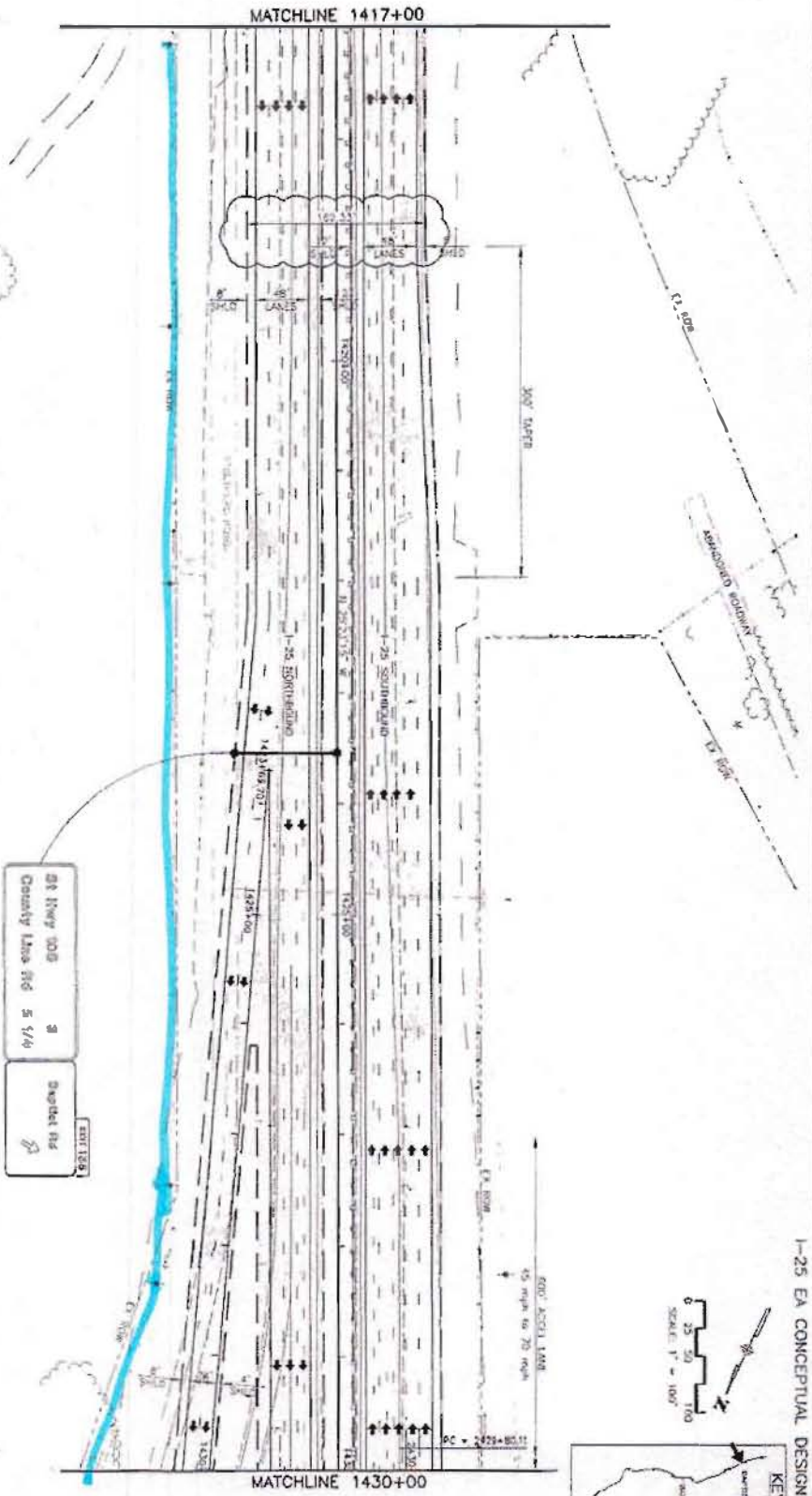
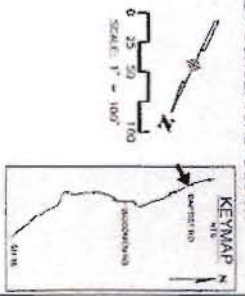
Design Rd 1/2
 Sit Heavy 305
 County Eas Ref 3

Computer File Information		Sheet Revisions	
Creation Date	11/7/01	Sheet	001
Last Modification Date	01/28/03	Revised	001
File Path	F:\V811001\1\WCD\0\0115	Revised	001
Project Name	K0194-101 PWS	Revised	001
Drawn By	Scott A. Shuman	Revised	001
Checked By		Revised	001
Approved By		Revised	001

Colorado Department of Transportation		As Constructed		Project No./Code	
Region	2	No. Revisions	1	Project No.	C 0252-316
Office	1400 Quail Lake Lane - Suite A Colorado Springs, Colorado 80906 Phone: (719) 634-2221 Fax: (719) 327-3338	Revised	1391+00 to 1404+00	Code	12210
Design	Engineer	Revised	1391+00 to 1404+00	Sheet No.	98 of 111
Checked	Design	Revised	1391+00 to 1404+00	Sheet No.	
Approved	Design	Revised	1391+00 to 1404+00	Sheet No.	

WISON & COMPANY
 ENGINEERS & ARCHITECTS

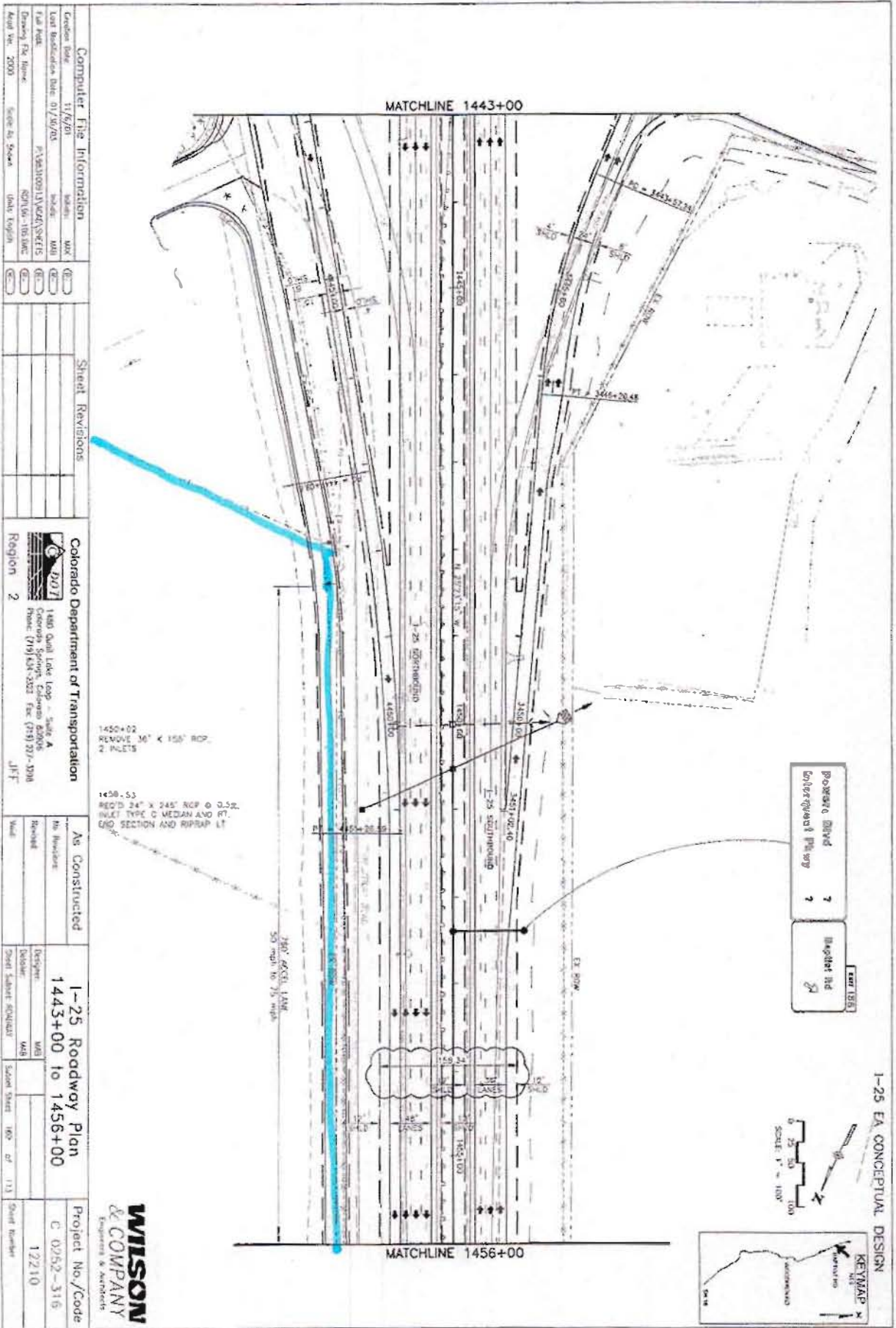
I-25 EA CONCEPTUAL DESIGN



30' HWY 305
 County Lane Rd 5' 1/4
 Dashed Rd
 EDIT 12/9

Computer File Information		Sheet Revisions		Colorado Department of Transportation		As Constructed		I-25 Roadway Plan		Project No./Code	
Creator Date: 11/7/03	Unit: WJK	Q1		1460 Quail Lake Loop - Site A	As Constructed	1417+00 to 1430+00	C 0252-316				
Last Modification Date: 01/29/03	Model: WJK	Q2		Colorado Springs, Colorado 80906	Sheet	WJK	12210				
File Path: P:\811001\1\K240\SET15	WJK	Q3		Phone: (719) 534-3201 Fax: (719) 277-1293	Inspector:	WJK					
Blowing File Name: 82738-10396	WJK	Q4		JTF	Sheet School ROOMS:	Sheet Sheet: 98 of 113					
Road No: 2000	Scale to Show: 1/4" = 100'	Q5									

WILSON & COMPANY
Engineers & Architects



Computer File Information	
Drawn Date:	11/7/01
Last Modification Date:	01/09/02
Drawn By:	WJL
Checked By:	WJL
Drawn File Name:	P:\STAT1001\1443\01\1443.DWG
Drawn Date:	11/07/01
Scale:	1 inch = 20 feet

Sheet Revisions	

Colorado Department of Transportation

1443 Dual Lane Loop - Sub-A

Colorado State Road 1443

Phone: (303) 439-3223 Fax: (303) 439-3218

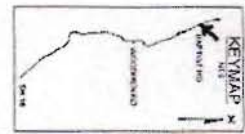
Region 2

JFF

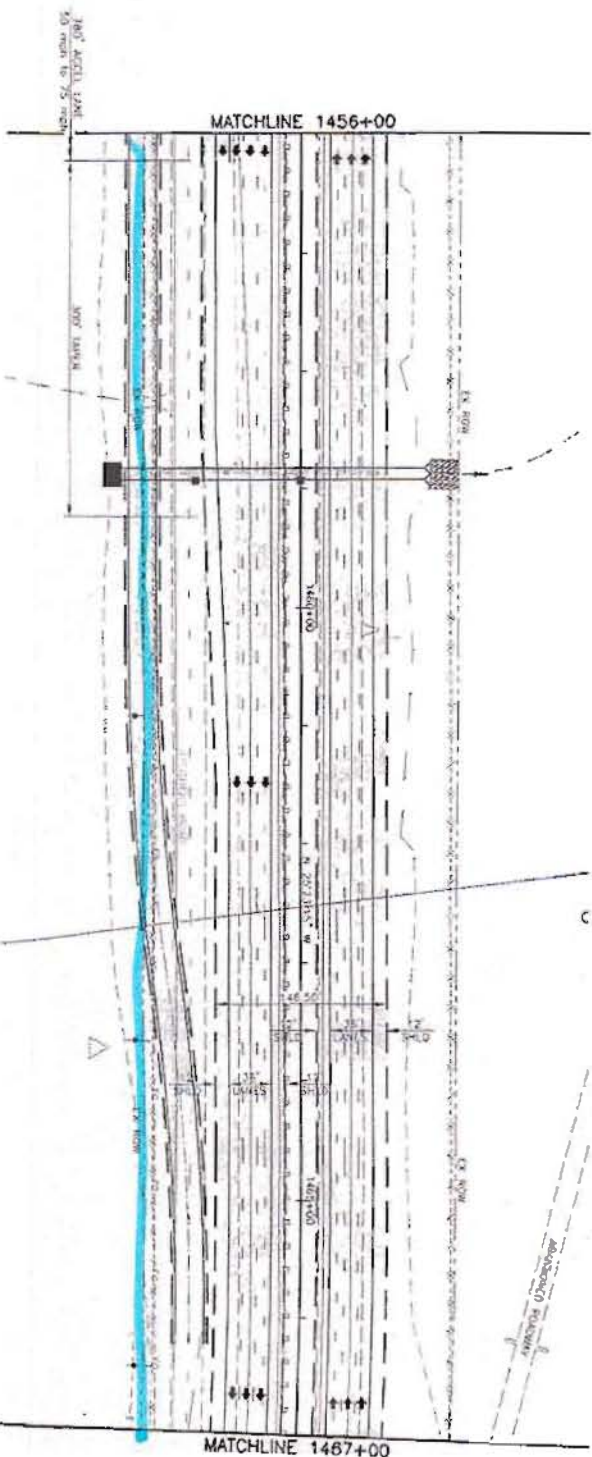
As Constructed		1-25 Roadway Plan 1443+00 to 1456+00		Project No./Code	
				C 0252-316	
				12210	

WILSON
& COMPANY
Engineers & Architects

Project No.	1443
Sheet No.	2
Scale	1" = 20'




1-25 EA CONCEPTUAL DESIGN



1456-88
 REMOVE 30' x 105' ASP.
 2' THICK
 RECONSTRUCT 18' x 48' x 25'
 RECONSTRUCT 18' x 48' x 25'
 RECONSTRUCT 18' x 48' x 25'
 RECONSTRUCT 18' x 48' x 25'
 RECONSTRUCT 18' x 48' x 25'
 RECONSTRUCT 18' x 48' x 25'
 RECONSTRUCT 18' x 48' x 25'
 RECONSTRUCT 18' x 48' x 25'
 RECONSTRUCT 18' x 48' x 25'

Computer File Information	
Creation Date:	11/9/01
Last Modification Date:	01/20/03
Plot Name:	P:\ASST\15\ACR\SHETS
Printing Name:	00\AS-103\DL
Plot Year:	2000

Sheet Revisions	

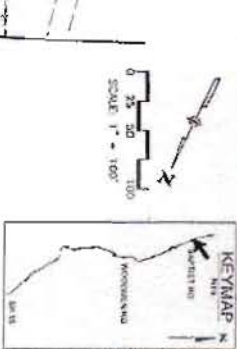

Colorado Department of Transportation
 1480 Duval Lake Loop - Suite A
 Colorado Springs, Colorado 80906
 Phone: (719) 525-2000 Fax: (719) 525-2099
 JLF

As Constructed	
Revised	

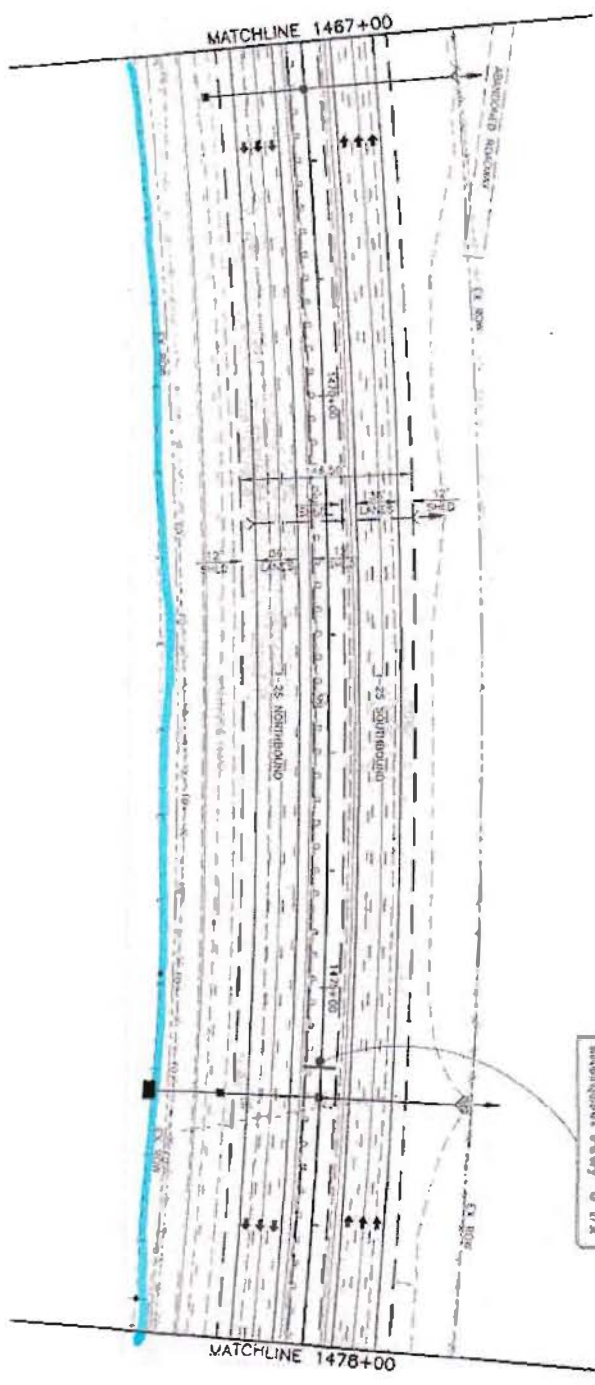
1-25 Roadway Plan	
Sheet	1456+00 to 1467+00

Project No./Code	
	C 0252-316
	17210

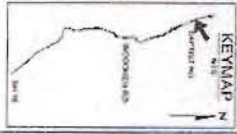
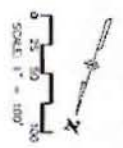
WILSON
 & COMPANY
 Engineers & Architects



CURVE DATA									
CURVE NO.	A	B	R _c	L _c	P _c	e	MOS	SSD	
147	147.013	699.277	8300.00	1578.42	781.96	0.24	80	2018	



Right of Way 6 1/2'
 Power Blvd 7'
 Intersected Property 6 1/2'



1-25 EA CONCEPTUAL DESIGN

1487-40
 REMOVE 24" X 210' RCP @
 0.5% INLET TYPE C MEDIAN
 AND RT. SHOULDER SECTION AND
 RIPRAP LT.

1471-05
 REMOVE 30" X 125' RCP

1475-95
 REMOVE 24" X 150' RCP,
 INLET
 REQ'D 18" X 43' HEMIP
 @ 0.5% INLET TYPE C MEDIAN
 AND RT. INLET SPECIAL (S TYPE C)
 RT. END SECTION AND RIPRAP LT.
 SW = 40' TO CURB 50' OFS
 CURB 1.25' OFS
 AHW = 6' DRIVEWAY = 4.7'

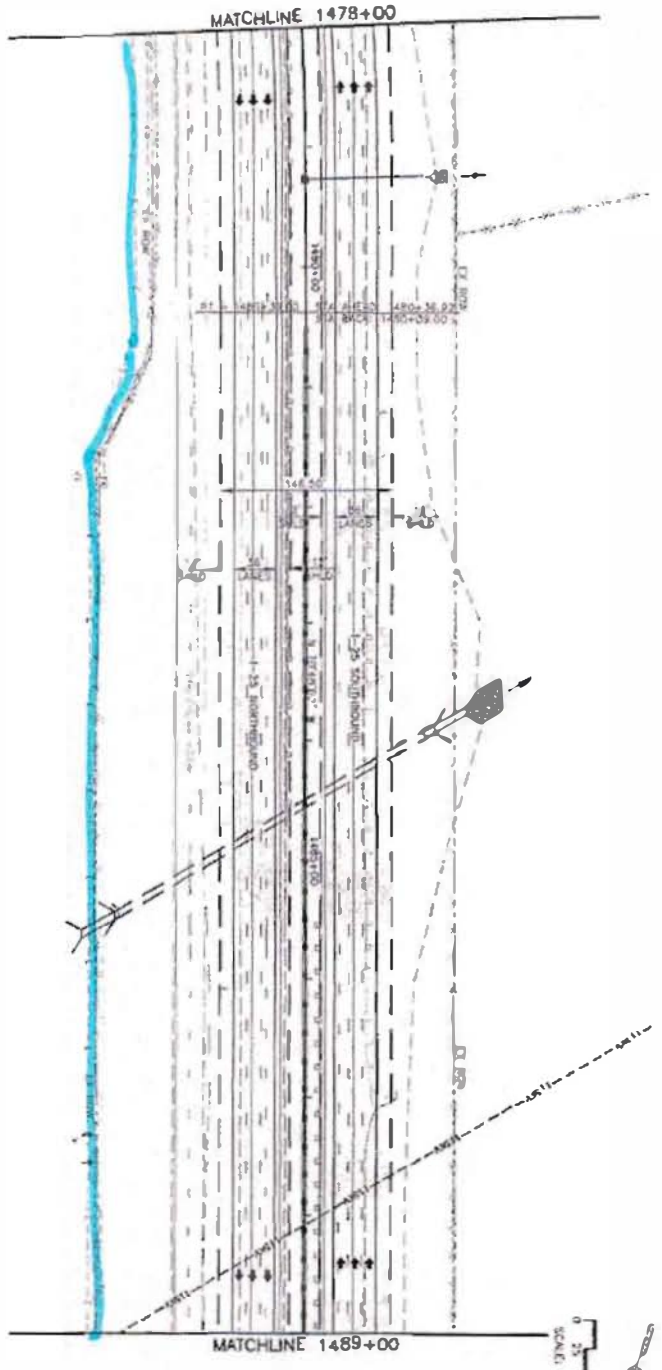
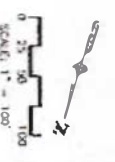
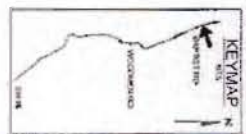
Computer File Information		Sheet Revisions	
Creation Date:	11/6/01	Issue:	REV
Last Modification File:	01/29/03	Issue:	REV
File Name:	P:\9610091\14720\SHEETS	Issue:	REV
Drawing File Name:	96109-100.dwg	Issue:	REV
Appr. Ver:	2000	Issue:	REV

Colorado Department of Transportation		As Constructed	
Region:	2	As Proposed:	
Project:	1480 Quail Lake Loop - Side A	Revised:	
Location:	Colorado Springs, Colorado	Sheet:	1467+00 to 1478+00
Contact:	Phone (719) 541-2825 Fax (719) 529-3398	Sheet Scale:	100' of 113'
Agency:	JIT	Sheet Number:	12210

WILSON
 & COMPANY
 Engineers & Architects

Project No./Code
 C 0252-316

1-25 EA CONCEPTUAL DESIGN



1478+27
 REQ'D 16" x 100' RCP
 @ 1.0% INLET TYPE C
 MED-WL. EXD SECTION
 AND BURRAP LT

1484+52
 REMOVE HDWALL AND RINDWALLS
 LT AND RT
 REQ'D EXTEND EXIST 6" x 9" CBC
 30' LT AND 30' RT @ 1.25%
 HDWALL AND RINDWALLS LT AND
 RT. BURRAP LT
 DAW 100 AC Dm 100 CFS
 Over 275 CFS
 AMT = 20' Drive = 6.8'

Computer File Information

Color Plot	11/15/01	width	mm
Last Modified Date	01/29/03	width	mm
Last PLOT		width	mm
Drawn File Name	P:\V120113\2002\10\12\12\12		
Drawn File Size	2002-10-12-12		
Drawn File	Sheet 14	Sheet	14

Sheet Revisions

Rev	Description

Colorado Department of Transportation



1480 Que Pasa Lane - Suite A
 Colorado Springs, Colorado 80908
 Phone: (719) 458-3212 Fax: (719) 237-3298

Region 2

As Constructed

By	
Check	
Date	

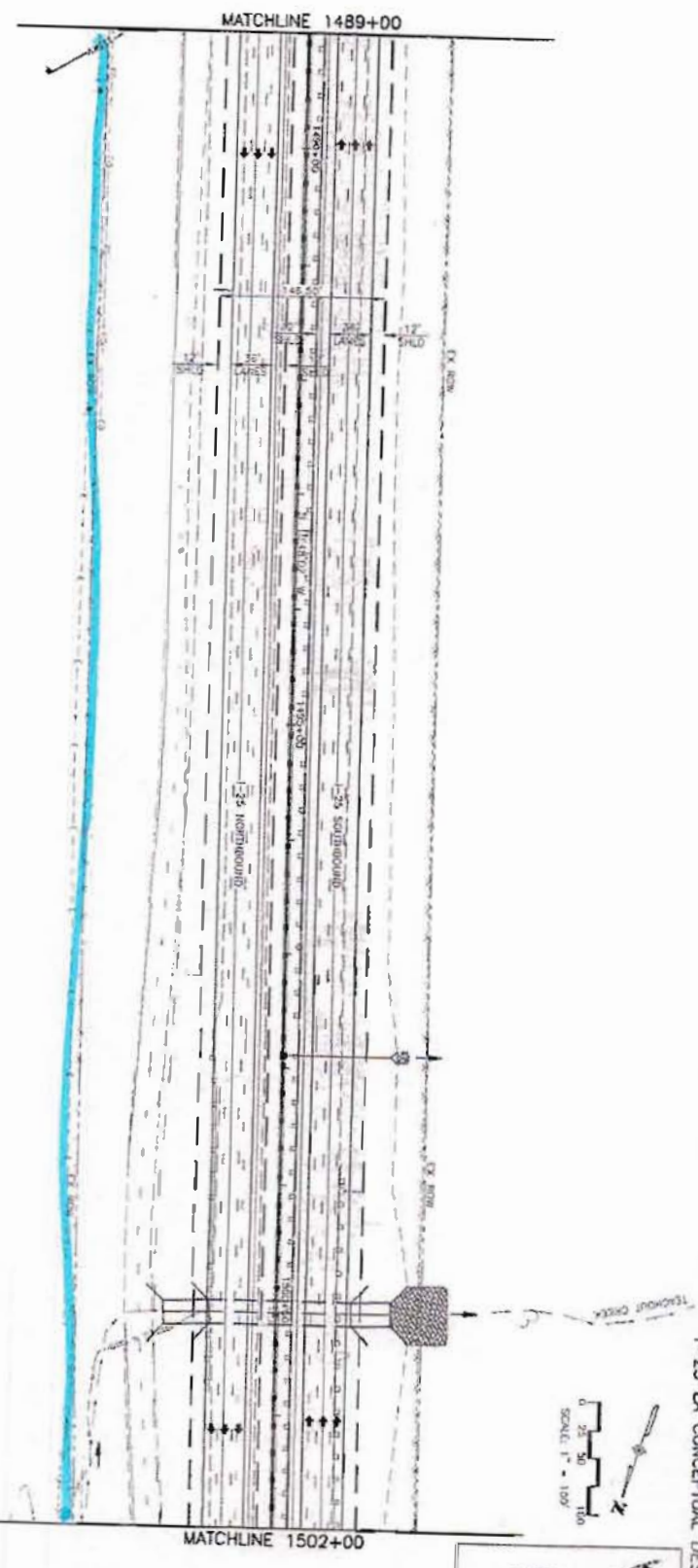
1-25 Roadway Plan

Sheet	1478+00 to 1489+00
Sheet	
Sheet	
Sheet	
Sheet	

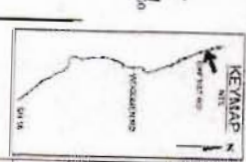
Project No./Code

C	0252-315
122210	

**WILSON
 & COMPANY**
 ENGINEERS & ARCHITECTS



I-25 EA CONCEPTUAL DESIGN



Computer File Information	
Creator Date	11/6/01
Last Modification Date	01/06/03
File Name	P:\23\1029\I-25\2D\CONCEPTS
Drawing File Name	1489-1502.DWG
Acad Ver	2000
Sheet No.	112

Sheet Revisions	

Colorado Department of Transportation
 1450 Dunc Linn Loop - Stop 4
 Colorado Springs, Colorado 80906
 Phone (719) 531-3111 Fax (719) 531-4096
 Region 2 JTF

As Constructed
No. Revisions
Revised

I-25 Roadway Plan	
1489+00 to 1502+00	

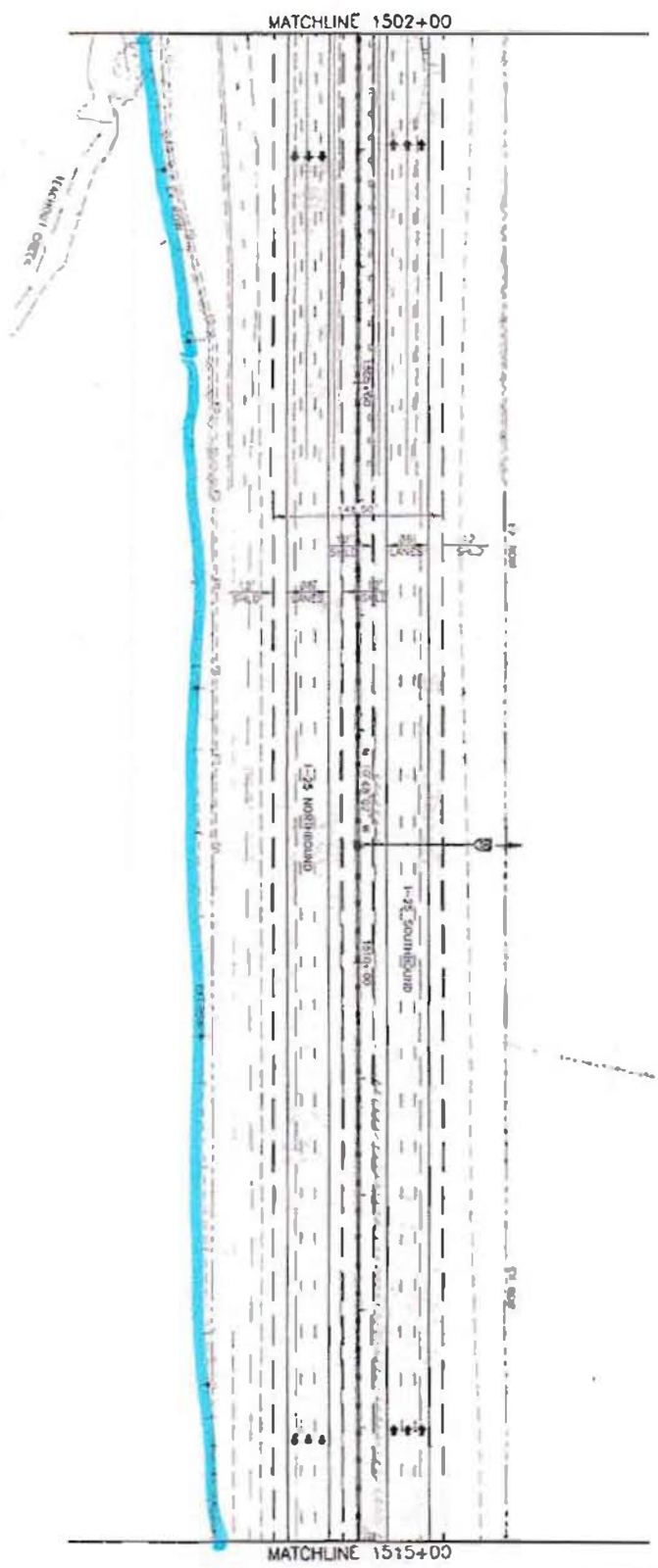
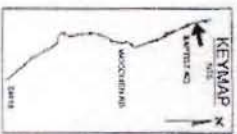
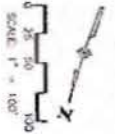
Project No./Code	
C 0252-315	

1487+88
 REQ'D 18" X 80" RCP @ 1.1%
 INLET TYPE C MEDIAN END SECTION
 AND RIBBON 'T'

1008-12
 REMOVE SIGNAL AND RAILROADS
 CT AND 6"
 REQ'D EXTEND EXIST. SOLID 10' X 40' C&G
 .1' AND 40' RT @ 1.1%
 SIGNAL AND RAILROADS LT AND
 RT, RIBBON 'T'
 @ 1.0% TO 50' ON O= 418' C&G
 @ 1.0%
 @ 1.0% ON O= 418' C&G
 @ 1.0%
 @ 1.0% ON O= 418' C&G
 @ 1.0%



I-25 EA CONCEPTUAL DESIGN



1502+00
 ROAD 18" X 100" RCP
 @ 1.0% SLOPE, 12" TYPE C MEDIAN,
 END SECTION AND PRRAP LT

Computer File Information

Creation Date	11/2/01	Author	WAC
File Modification Date	01/2/03	Editor	WAC
Full Path	P:\M110091\AKKON\PHILTS		
Working File Name	I01A06-102.DWG		
Acad Ver	2000	Save As Given	Units English

Sheet Revisions

Colorado Department of Transportation

1480 Quail Lake Lane - Suite A
 Colorado Springs, Colorado 80906
 Phone: (719) 534-3333 Fax: (719) 539-3333

Region 2

As Constructed

No. Revisions	
Revised	

I-25 Roadway Pion

1502+00 to 1515+00

Designer	WAC
Checker	WAC
Sheet Scale	30:1
Sheet Count	163 of 113

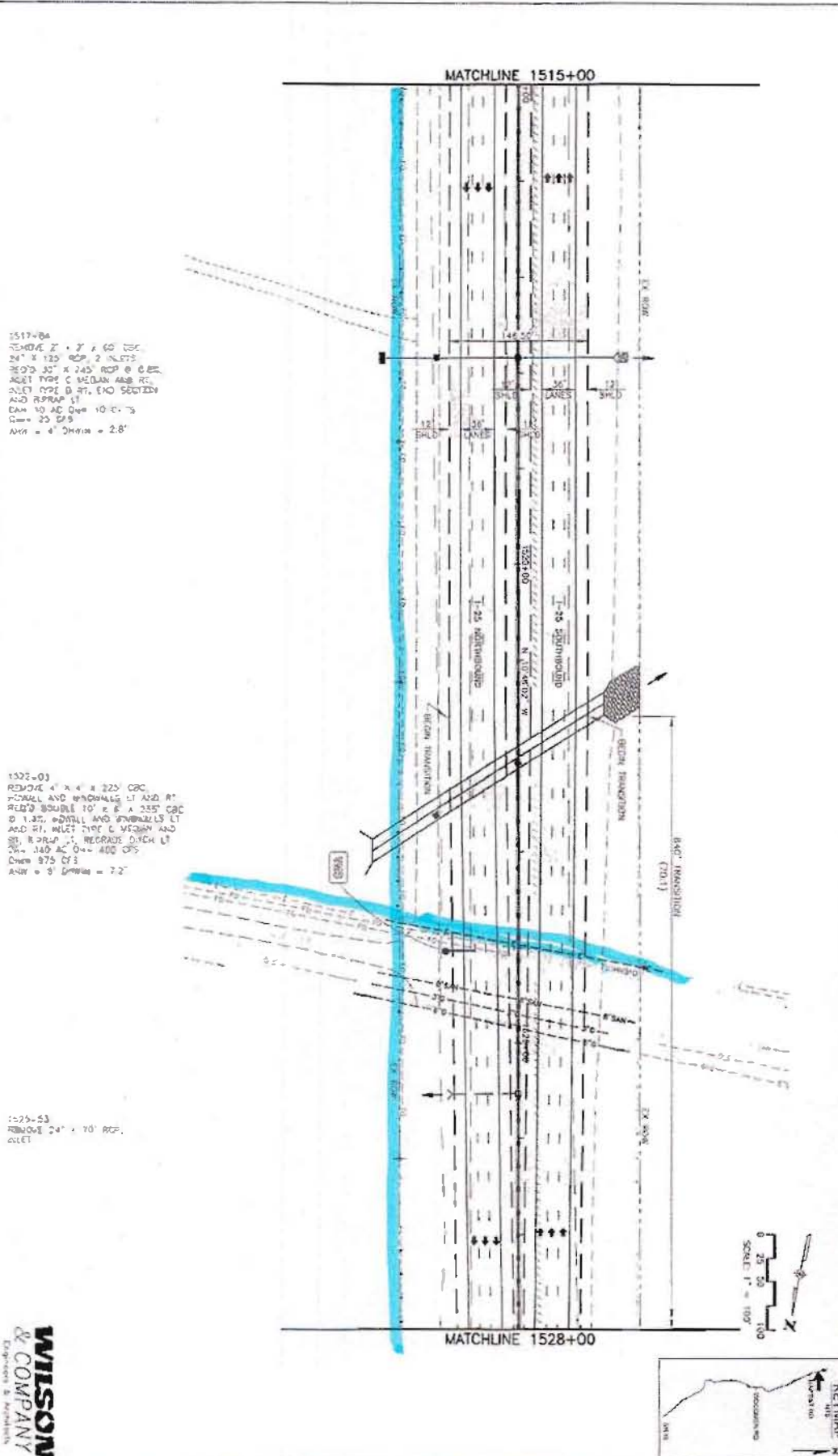
Project No./Code

C 0252-316

Sheet Number: 122/10



Computer File Information		Sheet Revisions			Colorado Department of Transportation	As Constructed		Project No./Code
Creation Date:	11/13/01	Author:	WJK			By:	WJK	
Last Modification Date:	07/20/03	Checker:	WJK			Checked:	WJK	1515+00 to 1528+00
File Name:	F:\AS11091\1515\CD\1515.DWG	Plotter:	HPGL	Engineer:	WJK	Sheet Number:	12210	
Drawing File Name:	1515.dwg	Printer:	HPGL	Sheet Scale:	1/8" = 1'-0"	Sheet Range:		
Acad Ver.:	2000	Scale:	As Shown					

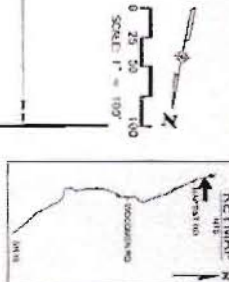


1517+04
 1517+05
 1517+06
 1517+07
 1517+08
 1517+09
 1517+10
 1517+11
 1517+12
 1517+13
 1517+14
 1517+15
 1517+16
 1517+17
 1517+18
 1517+19
 1517+20
 1517+21
 1517+22
 1517+23
 1517+24
 1517+25
 1517+26
 1517+27
 1517+28
 1517+29
 1517+30
 1517+31
 1517+32
 1517+33
 1517+34
 1517+35
 1517+36
 1517+37
 1517+38
 1517+39
 1517+40
 1517+41
 1517+42
 1517+43
 1517+44
 1517+45
 1517+46
 1517+47
 1517+48
 1517+49
 1517+50
 1517+51
 1517+52
 1517+53
 1517+54
 1517+55
 1517+56
 1517+57
 1517+58
 1517+59
 1517+60
 1517+61
 1517+62
 1517+63
 1517+64
 1517+65
 1517+66
 1517+67
 1517+68
 1517+69
 1517+70
 1517+71
 1517+72
 1517+73
 1517+74
 1517+75
 1517+76
 1517+77
 1517+78
 1517+79
 1517+80
 1517+81
 1517+82
 1517+83
 1517+84
 1517+85
 1517+86
 1517+87
 1517+88
 1517+89
 1517+90
 1517+91
 1517+92
 1517+93
 1517+94
 1517+95
 1517+96
 1517+97
 1517+98
 1517+99
 1518+00

1522+01
 REMOVE 4' X 4' X 22' C&G
 REMOVAL AND RECONSTRUCT 11' ADD AT
 RIGHT SHOULD 10' B & A 2.55 C&G
 B 1.35, R&D 11' AND 5' WIDEN AND
 ADD RT. R&D 7' OF C M&S&H AND
 8' B&D, R&D 11'. REGRASS DITCH AT
 2% = 145 AC 0+ = 400 CFS
 Ditch = 875 CFS
 ASH = 0' Ditch = 7.2'

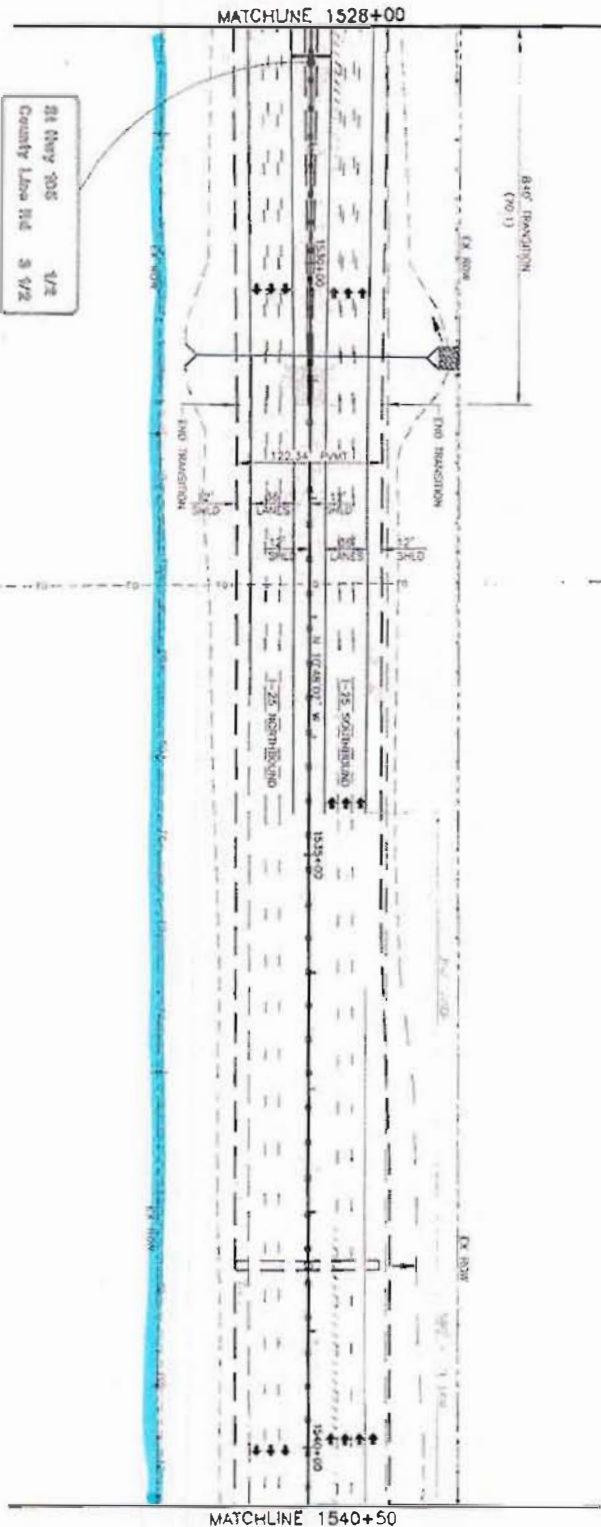
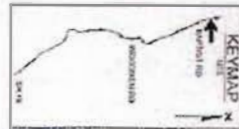
1525+53
 1525+54
 1525+55
 1525+56
 1525+57
 1525+58
 1525+59
 1525+60
 1525+61
 1525+62
 1525+63
 1525+64
 1525+65
 1525+66
 1525+67
 1525+68
 1525+69
 1525+70
 1525+71
 1525+72
 1525+73
 1525+74
 1525+75
 1525+76
 1525+77
 1525+78
 1525+79
 1525+80
 1525+81
 1525+82
 1525+83
 1525+84
 1525+85
 1525+86
 1525+87
 1525+88
 1525+89
 1525+90
 1525+91
 1525+92
 1525+93
 1525+94
 1525+95
 1525+96
 1525+97
 1525+98
 1525+99
 1526+00

1-25 EA CONCEPTUAL DESIGN



WILSON & COMPANY
 Engineers & Architects

I-25 EA CONCEPTUAL DESIGN



1530+74
 REMOVE 2' X 2' X 85' C&G
 24' X 115' RCP INLET
 @
 REQ'D 88' X 185' RCP
 1.5' RCP
 1.5' RCP
 AT APPROX LT
 STA 1530+74 TO C&G
 STA 1530+74 TO
 STA 1530+74
 5.5' X 4' RCP
 5.5' X 4' RCP

1538+45
 REMOVE
 11.5' X 17.0' X 17.0' RCP
 11.5' X 17.0' RCP
 11.5' X 17.0' RCP

Computer File Information		Sheet Revisions	
Creation Date: 11/13/01	WKS: W01	NO.:	REV:
Last Modification Date: 01/20/03	WKS: W01	NO.:	REV:
Tool Path: P:\S\1001\1528\1528.DWG	WKS: W01	NO.:	REV:
Drawing File Name: 1528-100-111.DWG	WKS: W01	NO.:	REV:
Acad Ver: 2000	Scale As Shown	Units: English	REV:

Colorado Department of Transportation		As Constructed	
	1450 Bent Lake Loop - Suite A Colorado Springs, Colorado 80905 Phone: (719) 535-3333 Fax: (719) 535-3300	To Station:	
Region 2	JTF	From:	

I-25 Roadway Plan		Project No./Code	
1528+00 to 1540+50		C 0262-316	
Drawn by: W01	Checked by: W01	12210	
Sheet: 107 of 111	Sheet Size: 107 of 111	Sheet Number:	

WILSON & COMPANY
 Engineers & Architects

1/11/2011 10:00 AM

Computer File Information	
Creation Date	11/11/2011
Last Modification User	01/29/2011
File Name	P:\98110911\ACAD\DWG\1112.DWG
Drawing File Name	0091109-1112.DWG
Acad Ver.	2008
Scale As Screen	Units English

Sheet Revisions	

Colorado Department of Transportation



1480 Gault Lake Loop - Suite A
 Colorado Springs, Colorado 80906
 Phone: (719) 534-3283 Fax: (719) 537-1208

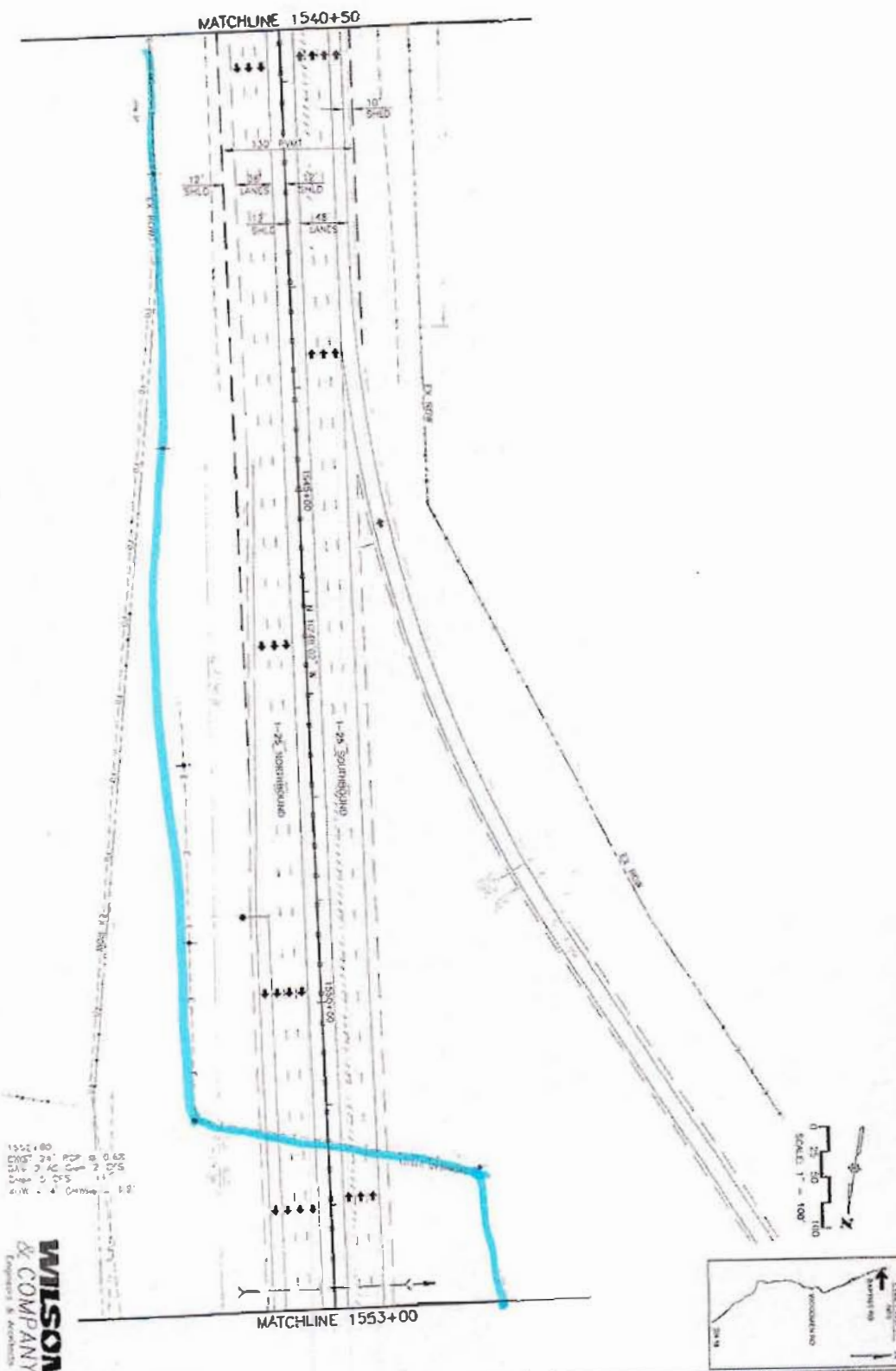
Region 2

JFF

As Constructed	
No. Revisions	
Revised	
Year	

I-25 Roadway Plan 1540+50 to 1553+00	
Designer	WJL
Checker	WJL
Sheet Number	106 of 111

Project No./Code	
C 0252-316	12210
Sheet Number	



WILSON & COMPANY
 Engineers & Architects